



2021- 2025 ELECTION ADMINISTRATION PLAN



Table of Contents

Executive Summary.....	6
Vote-By-Mail Ballots.....	7
Background	7
Ballot Printing	7
Vote-by-Mail Ballot Preparation	8
Processing Returned Vote-by-Mail Ballots.....	8
Counting Returned Vote-by-Mail Ballots.....	8
Tracking Vote-by-Mail Ballots.....	8
Vote Center and Ballot Drop Box Locations.....	10
Vote Center Formula and Considerations.....	10
Vote Center Minimum Requirements	11
Vote Center Site Selection Suitability Model.....	11
Vote Center Facility Recruitment Process.....	12
List of Potential Vote Centers with Days and Hours of Operation	12
Vote Center Layout.....	13
Ballot Drop Box Formula and Considerations.....	15
Ballot Drop Box Minimum Requirements	15
Ballot Drop Box Suitability Model	15
Ballot Drop Box Location Recruitment Process	16
List of Potential Ballot Drop Boxes with Days and Hours of Operation	17
Vote Center and Ballot Drop Box Mapping Tool.....	17
Methodology	18
Site Selection Suggestion Form on Website.....	18
Services for Voters with Disabilities	19
Information for Services for Voters with Disabilities included in VIGs and VBM	
Instructions	19

Accessible Information Posted to Website	20
How a Voter with Disabilities may request a VBM, RAVBM, or Replacement Ballot	20
Remote Accessible Vote-By-Mail	21
Type and Number of Accessible Ballot Marking Devices	21
Type and Number of Reasonable Modifications at Vote Centers.....	21
Toll-Free Voter Phone Line.....	22
Video Conferencing	22
Language Assistance Services.....	23
Translated Reference Ballots and Language Assistance Card	23
Language Assistance Services included in VIGs or VBM instructions and Website ..	24
Bilingual Vote Center Staffing and Supported Languages	24
Toll-Free Voter Phone Line and Multilingual Public Phone Bank.....	25
Video Conferencing	25
Voting Technology.....	26
Electronic Poll Books.....	26
Voting System	26
Voting Security.....	28
Security and Contingency Plans to Ensure Prevention of Disruption.....	28
State, Federal, Local Partnerships	28
Internal Controls	28
Procedures, Methods and Standards	29
Security and Contingency Plans to Ensure Continuation of Election in Event of Disruption.....	29
Vote Center Response During the Voting Period.....	30
Incident Response Plan.....	30
Methods and Standards.....	31
Fiscal Impact	33

Estimates of Short-Term and Long-Term Savings	33
Shifts in Voter Behavior & Operational Preparedness	34
Overview of Voter Education and Outreach Plan	35
Summary of Goals	35
Community Partners.....	35
Community Election Working Group.....	36
Voter Education Workshops for Language Communities.....	37
Methods to Identify Language Communities	37
Toll-Free Voter Phone Line and Multilingual Public Phone Bank	38
Voter Education Workshop for Disability Community	38
Remote Accessible Vote-By-Mail Outreach.....	38
High Schools.....	39
Colleges and Universities	39
Business Partners.....	40
Speaking Engagements and Community Events	40
Speaking Engagements	40
Community Events.....	41
Elected Officials and Government Agencies.....	41
Collaborative Community Outreach	42
Community Engagement Suite	43
General Media Plan	43
Mobile Voting.....	46
Community Engagement Mobile Outreach Vehicle	46
Pop-Up Mobile Voting Unit	47
Projected Budget for Voter Outreach.....	48
Voter Education and Outreach Funding and Comparison to Past Budgets.....	48
Appendices	50

Public Meetings.....	50
Sample Speaking Engagements and Community Events.....	51
City Officials and Government Agencies.....	54
Community Partners	56
Media Partners	61
Language Media Partners.....	63
Public Input Overview	65
Community Elections Working Group	65
Meeting Agenda.....	67
Vote Center Layout	73
List of Vote Centers and Ballot Drop Box Locations	74
11 Day Vote Centers.....	74
4 Day Vote Centers.....	74
Ballot Drop Box Locations	74
Voter’s Choice Act Criteria Maps.....	83
Public Transit Routes.....	83
Areas with Low Vote-by-Mail Usage	84
Population Density	85
Language Communities.....	86
Voters with Disabilities	87
Low Household Vehicle Ownership.....	88
Areas with Low-Income Communities.....	89
Areas with Eligible Residents Who are Not Yet Registered to Vote	90
Areas Not Suitable for Vote Center or Ballot Drop Box Locations	91
2020 General Election – Turnout by Vote Center	92
2020 General Election – Vote-By-Mail Turnout.....	93
2020 General Election – Voter Turnout Distribution	94

Community Event Calendar List..... 95
Mobile Fleet 107
Vote Center Newsletter 108
Publications 109
 Public Notice for Consultation Meetings..... 110
 Public Notice for August 25, 2021 Public Hearing 111
Public Comments & Feedback 112
 2021 Amended Election Administration Plan..... 112

Executive Summary

The 2019 Election Administration Plan (EAP) was created using feedback from the public and provided the foundation and guiding outline to implement the Vote Center model of voting in Orange County in 2020. 2020 was a unique and historic election cycle as COVID-19 presented unprecedented challenges for election administrators and record-breaking voter turnout in both 2020 primary and general elections.

Following the finalization of the EAP, OCROV implemented a comprehensive Voter Education and Outreach Plan (VEOP), ranging from expanding our social media presence, partnerships with high schools and institutions of higher education, and collaborations with elected officials and government agencies. The plan supported OCROV in meeting its goal of informing Orange County's 1.8 million voters of the changes for the primary election and enhanced its marketing and outreach plans to inform voters of safe and secure voting options for the general election.

The 2021-2025 EAP is updated to reflect election operations after conducting several large and small elections under the Vote Center model in Orange County and incorporates feedback from the public. As always, OCROV remains committed to protecting a voter's ability to choose when and how they would like to cast their ballot and will continue to safeguard voters against the spread of misinformation by keeping voters informed of all services available under the Vote Center Model.

As Orange County continues to operate elections under the Vote Center model, my team of sixty-six staff members and I remain committed to our mission to provide election services for the citizens of Orange County to ensure equal access to the election process, protect the integrity of votes, and maintain a transparent, accurate and fair process.



Neal Kelley
Registrar of Voters
Orange County, CA

Vote-By-Mail Ballots

§4005(a)(8)(A)

The implementation of the Voter's Choice Act (VCA) in Orange County requires that every one of its 1.8 million registered voters receive a vote-by-mail (VBM) ballot. Orange County has been able to handle the increase in volume of the printing, mailing, and processing of VBM ballots resulting from this obligation. The requirement supports current voter behavior and projected trends, which the Orange County Registrar of Voters (OCROV) has already taken into consideration; moving to hybrid vote-by-mail and in-person voting was a matter of ramping up pre-existing operations.

Background

In the November 2018 General Election, OCROV issued over 1.1 million VBM ballots to voters who specifically requested to receive their ballots by mail. The number of voters who request to receive ballots by mail had been steadily increasing since 2002, to the level of 1.1 million ballots before Orange County implemented the VCA, or approximately 69% of the total registered voters. The rise of VBM requests required us to increase capacity to mail and process ballots. This increased capacity, which had already been implemented, allowed processing VBM ballots for all voters in Orange County in 2020. In the March 2020 Primary Election, which was held before any COVID-19 restrictions, 79% of voters returned a VBM ballot, while the other 21% voted in-person at a Vote Center. In the November 2020 General Election, 81% of voters returned a VBM ballot while the other 19% voted in-person at a Vote Center. Of all the ballot return methods used in the November 2020 Presidential Election, ballot drop boxes were the most popular option, with 581,433 voters returning their ballots using a ballot drop box.

Ballot Printing

Unlike most California counties, Orange County prints ballots in-house for all voters. Ballots are currently printed on a high-speed, inkjet, web-press printer. The commercial state-of-the-art printer produces high quality images at a speed of 250 feet per minute, which allows for the accelerated printing of 1.8 million ballots in a relatively short amount of time.

Vote-by-Mail Ballot Preparation

OCROV currently operates its own mail inserting equipment, which inserts the correct ballot, instructions, and return envelope into the VBM packet to be sent to voters. It also simultaneously prints the address and required voter information on both the outgoing and return envelopes for the voter. This technology can insert approximately 10,000 ballots per hour, allowing our office to prepare all 1.8 million ballots in an estimated time of three weeks.

Processing Returned Vote-by-Mail Ballots

OCROV currently operates its own high-speed mail sorting equipment that is used to process returned ballots. This equipment takes an image of every returned envelope, and tracks that the ballot has been returned. The images of the returned envelopes are used by staff to perform a signature comparison of the ballots and determine if the signature matches. This technology can process up to 45,000 pieces per hour, and the staff that check signatures can review approximately 10,000 signatures per hour. The speed of the mail sorting equipment, and its integration with the signature checking process, has allowed OCROV to seamlessly handle the increased volume of returned VBM ballots.

Counting Returned Vote-by-Mail Ballots

The office replaced its voting system in 2020 and increased its capacity to scan the large volume of returned VBM ballots. For the November 2020 General Election, OCROV was able to have all ballots received before Election Day scanned and included in the tally on Election Night. The remaining ballots, many of which were received after election day, were scanned into the voting system by November 9.

Tracking Vote-by-Mail Ballots

The increase in the use of VBM ballots has resulted in a requirement for an increase in service levels to be provided to voters. The office added the ability for voters to track the status of their ballots online through a customized internal solution, OC Ballot Express. VBM ballots are tracked using a United States Postal Service barcode as they are mailed and returned to the office. They are also tracked if they have been dropped off at a Vote Center or ballot drop box. Voters can go to the website and check the status of their ballots as it is sent and returned to our office. They can also see if their ballots have been verified and counted. This recently added ballot tracking capability has provided data to best respond to the increased level of service required by the

additional VBM processing. This was widely used in both 2020 Primary and General Elections and was an important component to providing confidence to the voters that returned their ballots by mail or dropped them off at a ballot drop box or Vote Center location.

Vote Center and Ballot Drop Box Locations

§4005(a)(10)(B)

The VCA establishes detailed criteria and formulas for the placement and locations of Vote Centers and ballot drop boxes. Vote Centers and ballot drop box locations are established based on specific considerations and requirements described below:

- Proximity to public transportation
- Proximity to communities with historically low vote-by-mail usage
- Proximity to population centers
- Proximity to language minority communities
- Proximity to voters with disabilities
- Proximity to communities with low rates of household vehicle ownership
- Proximity to low-income communities
- Proximity to proximity to communities of eligible voters who are not registered to vote and may need access to same day voter registration
- Proximity to geographically isolated populations
- Access to accessible and free parking
- The distance and time a voter must travel by car or public transportation
- The need for alternate methods for voters with disabilities for whom vote by mail ballots are not accessible to cast a ballot
- Traffic patterns
- Public or private universities and college campuses

Vote Center Formula and Considerations

§4005(a)(10)(l)(vi)(l)

The VCA has established a formula for determining the number of Vote Centers based on the number of registered voters. Counties must provide one 11-day Vote Center for every 50,000 registered voters and one 4-day Vote Center for every 10,000 registered voters. The VCA formula that establishes the minimum number of Vote Centers is based on the total registered voters at 88 days before Election Day.

For the March 2020 Primary Election, OCROV was required to provide 32 Vote Centers open for 11 days, including Election Day, and 161 Vote Centers open for 4 days, including Election Day. Orange County ultimately operated 38 Vote Centers open for

11 days, including Election Day, and 189 Vote Centers that were open for 4 days, including Election Day. Expanding the number of Vote Centers enabled the placement of additional Vote Centers in isolated communities like Silverado and Trabuco Canyon.

Vote Centers open sequentially, with a greater number of Vote Centers in operation as Election Day approaches. All Vote Centers are in full operation during the last four days of voting, including Election Day. Additionally, during the first seven day of voting the Vote Center operational hours are 8 a.m. to 5 p.m. and expand as Election Day nears.

Vote Center Minimum Requirements

OCROV identifies and assesses hundreds of potential facilities to ensure that locations are distributed throughout Orange County in a manner that provides greater access and convenience for all voters.

In an effort to elevate the quality of Vote Centers, OCROV has established minimum requirements that go above the requirements set forth in the statute. The selection of Vote Centers is based on accessibility to voters with disabilities and language needs, size of the voting room, facility availability, and public feedback. OCROV uses voter data, population data and other criteria to select the most ideal Vote Centers locations.

Vote Center Site Selection Suitability Model

VCA requires counties to consider fourteen criteria when establishing Vote Centers. OCROV staff created a Vote Center Suitability Model, which brings together the most current available geospatial and demographic data, to consider all required criteria. The Vote Center Suitability Model uses an interactive mapping tool that allows the user to search for and evaluate any proposed location against all required criteria (see Vote Center and Ballot Drop Box Mapping Tool on page 17).

While the Vote Center Suitability Model provides a quick and effective way to assess proposed locations against the required criteria, it does not automatically define where Vote Center locations will be finalized. OCROV must also take into account other requirements such as overall accessibility and facility availability.

Vote Center Assessment Matrix

In addition to considering required criteria, a Vote Center Assessment Matrix is used to consider many other site selection elements that, while not required by law, impact the

Vote Center siting process. Some examples of these site selection elements include parking availability, size of the voting room, the presence of adequate lighting, both inside and outside, and the geographic area of the proposed site.

All potential Vote Centers are scored across pre-defined site selection elements. The resulting score is used to determine how suitable or unsuitable a facility may be to serve as a Vote Center.

Vote Center Facility Recruitment Process

The Vote Center recruitment process begins with an analysis of past voting locations from previous elections. Additionally, each city is evaluated using VCA requirements and population data to ensure the equitable distribution of Vote Centers across the county. In the early phase of the recruitment, OCROV works closely with municipal partners and public agencies to identify all available facilities.

After the initial analysis and evaluation phase, a master list of desirable Vote Center locations is created. Each location is reviewed and assessed to determine if they meet the established minimum Vote Center requirements. Locations that do not meet the minimum requirements are eliminated from the recruitment process. Examples of locations that are not able to accommodate Vote Center operations are private residences and locations with smaller usable space for voting. Facilities that meet the minimum requirement move forward to the next level of review in the recruitment process.

List of Potential Vote Centers with Days and Hours of Operation

§4005(a)(10)(l)(vi)(III), §4005(a)(10)(l)(vi)(VI)

Vote Center locations are selected in conjunction with public feedback and the requirements as necessitated by law. The final list of selected Vote Centers is included in the Voter Information Guide (VIG) and is available on the OCROV's website, ocvote.com.

Starting ten days before Election Day, select Vote Centers are open during regular business hours, 8:00 a.m. to 5:00 p.m. All Vote Centers are open 8:00 a.m. to 8:00 p.m. during the last few days of voting, and 7:00 a.m. to 8:00 p.m. on Election Day. See page 75 in Appendices for a sample of an 11 Day and 4 Day Locations List. Each election, OCROV publishes a list of Vote Centers at ocvote.com/votecenter.

Vote Center Layout

§4005(a)(10)(I)(vi)(XI)

All Vote Centers are equipped with multiple electronic check-in stations that allow Vote Center staff to verify the identity of the voter quickly and easily. At Vote Centers, a voter is able to:

- Vote in-person or drop off a vote-by-mail ballot;
- Use an accessible ballot marking device that allows voters with disabilities to vote independently;
- Get a replacement ballot;
- Get language assistance; and
- Register to vote or update registration information.

OCROV creates unique 2D and 3D scaled layouts for each Vote Center to ensure all voting equipment is placed in a manner that allows a voter to mark their ballot independently and privately. Layouts must be sensitive to the accessibility needs of voters and are adjusted to accommodate the varying shapes and room sizes of each location. Depending on the various specifications unique to each Vote Center, the number of check-in stations and ballot marking devices will vary. (see page 73 in Appendices for a sample layout).

Each Vote Center layout incorporates three stations:

- Check-in Station: Voters can register to vote, receive a replacement ballot, drop-off the vote-by-mail ballot, and request assistance
- Vote Station: Voters mark their choices privately and independently in a secure voting booth or at a ballot marking device
- Scan Station: Voters deposit ballot into a secure scan station and receive their “I Voted” sticker

Number of Vote Center Employees

§4005(a)(10)(I)(vi)(IX)

The projected need for Vote Center employees is based on the number of 11-day and 4-day Vote Centers, the number of check-in stations in relation to the anticipated capacity of a Vote Center. Estimates of the number of required Vote Center employees are calculated based on an average of seven staff needed at any Vote Center and one lead per location. Some locations identified as Vote-by-Mail Drive-Thru locations required an additional 2-3 staff to support the operations. The average considers that there may be differences in the number of required staff at any given Vote Center.

Vote Center Type	Shift Type		Projected Need by Shift
11 Day	Full Shift	38 x 5 =	190
4 Day	Full Shift	150 x 3 =	450
11 Day	Partial Shift	38 x 4 =	152
4 Day	Partial Shift	150 x 8 =	1,200
Total Projected Need			1,992

Ballot Drop Box Formula and Considerations

§4005(a)(10)(I)(vi)(II)

The VCA requires counties to provide at least one ballot drop box location for every 15,000 registered voters. Voter registration data is analyzed to determine the estimated number of ballot drop boxes needed in each city and unincorporated areas. OCROV has installed 116 ballot drop boxes throughout Orange County.

Minimum criteria is considered and evaluated when researching any potential ballot drop box locations. Ballot drop box sites that best provide voters with additional options to securely and conveniently drop off their ballots are considered first. When siting ballot drop box locations, best efforts are made to identify locations with existing security camera coverage.

Ballot Drop Box Minimum Requirements

§4005(a)(10)(I)(vi)(VI)

In addition to the VCA minimum requirements, the California Secretary of State (SOS) provides additional regulations such as accessibility and language requirements. Ballot drop boxes are designed to provide translated legal language included in the graphics of the ballot drop box. Future consideration may include the possibility of adding additional features to support voters with disabilities, such as content in braille or tactile directional signage, and OCROV will work with disability community partners to research best practices for future consideration. The viability of a potential location is also dependent on meeting minimum accessibility requirements as determined by a detailed assessment.

All ballot drop boxes installed throughout the county are open to the public 24 hours a day, 7 days a week starting 29 days before election day. Ballot drop boxes are designed for outdoor use, in public locations with preventative security measures in place such as anti-vandalism coating, fire suppression mechanisms and custom designed secure ballot collection bags.

Ballot Drop Box Suitability Model

OCROV staff created a Ballot Drop Box Suitability Model, which brings together the most current available geospatial and demographic data, to consider all required criteria. The Ballot Drop Box Suitability Model is an interactive mapping tool that

allows the user to search for and evaluate any proposed location against all required criteria and specific regulations (see Vote Center and Ballot Drop Box Mapping Tool on page 17).

While the Ballot Drop Box Suitability Model provides a quick and effective way to assess proposed locations against the required criteria, it does not automatically determine where ballot drop box locations are installed.

Ballot Drop Box Assessment Matrix

In addition to considering the required criteria, a Ballot Drop Box Assessment Matrix is used to consider many of the other site selection elements that, while not required by law, impact the siting process. Some examples of these site selection elements include, presence of an onsite security camera, availability of short term/temporary parking spaces for the ballot collection team, and the presence of adequate lighting at the proposed site.

Ballot Drop Box Location Recruitment Process

An informational marketing packet has been developed which includes a letter from Registrar of Voters Neal Kelley and an informational ballot drop box flyer on specifications, expectations, and frequently asked questions. The packet is used to outreach to potential sites to provide detailed information about the ballot drop box process. The packet includes a ballot drop box agreement so that all parties have a clear understanding of roles and obligations.

Previous polling place sites were reviewed to determine if the location could support a ballot drop box on site. Working concurrently with potential Vote Center site selections, different ballot drop box locations have been identified that provide voters with additional ballot return options. In addition, city sites, county sites, libraries, and other publicly available locations have been reviewed and evaluated as potential ballot drop box locations. OCROV has partnered with many well-known retail shopping centers and private property owners to install ballot drop boxes.

Every potential ballot drop box site undergoes a site assessment to determine suitability and accessibility. Once the site is deemed viable for a ballot drop box, OCROV staff works with the site tenant, property management company, and/or property owner for final determinations on the ballot drop box's placement at the site.

All existing ballot drop box locations are analyzed and reviewed continuously to determine suitability, longevity, and the projected growth in certain communities.

List of Potential Ballot Drop Boxes with Days and Hours of Operation

§4005(a)(10)(l)(vi)(IV), §4005(a)(10)(l)(vi)(VII)

OCROV currently has 116 ballot drop boxes installed throughout the county and is using data, maps and trends for any potential future additions or relocations. Ballot drop box locations are selected in conjunction with public feedback and the requirements as necessitated by law. All ballot drop boxes are open for 30 days, including Election Day, and are available 24 hours per day, 7 days per week until 8:00 p.m. on Election Day. See page 80 in Appendices for all installed Ballot Drop Box Locations List. The final list of installed ballot drop boxes is included in the VIG and updated on the OCROV's website at ocvote.com/votecenter.

Vote Center and Ballot Drop Box Mapping Tool

To assist with selecting sites for Vote Centers and ballot drop boxes, the agency's GIS division has created a suitability model and web mapping tool. Using a framework of guidelines designated by the VCA, data-specific criteria determined by OCROV staff, and Geographic Information System (GIS) technology, a suitability model was produced to grade the degree of suitability for all areas in Orange County to host Vote Centers and ballot drop box locations.

To accomplish this, a grid array of cells was created to cover the entire County, and then populated these grid cells with spatial data related to the requirements set forth in the VCA. Data were gathered from a variety of public entities and covers topics such as transportation, population density, voter registration and voting patterns, language requests, disabilities, and income. OCROV staff analyzed all the data and requirements and created a ranking system to set priorities within the VCA requirements list. Once priority needs were determined, an algorithm was created that compiled all the data and generated a "score" for each grid cell in the County. The resulting "score" is used as a baseline to determine priority of need for the locations of Vote Centers and ballot drop boxes throughout the County.

To further assist with the process, an interactive web mapping tool was created to display the layers of data used to meet VCA requirements, the resulting grid cell array

with their “scores”, and potential Vote Center and ballot drop box locations based off of archived polling places, public infrastructure, and community sites. The tool allows exploring the existing data, proposing new sites, tracking the progress of the site selection process, and making informed decisions.

Methodology

Using VCA guidelines, data-specific criteria determined by OCROV staff, and GIS technology, produce a suitability model to represent the degree of suitability in fulfillment of all mandated criteria for all areas in the County to host Vote Centers and ballot drop box locations.

- Create a 500' grid array that divides the County into discrete areas of a consistent size. The grid cell size was determined by analyzing the spatial resolution of available data, the total surface area of the county, and the desired level of granularity for analysis by OCROV staff.
- Overlay and spatially join voter registration records, demographic data, and infrastructure data to the grid to create a standardized array of data.
- Create a system for data values within each layer of data to specify a way to identify high, medium and low fulfillment of criteria to inform Vote Center facility recruitment.

Site Selection Suggestion Form on Website

Another way Vote Center and ballot drop box locations are selected for assessment is public feedback received through the Vote Center website online Site Suggestion Form ocvote.com/votecenter. This allows the public to provide a facility name, address, and a reason for suggesting a location. OCROV will continue to gather and review suggestions and recommendation from the public on where Vote Centers and ballot drop boxes should be established for future elections.

Services for Voters with Disabilities

§4005(a)(10)(l)(vi)(X)

Orange County is committed to providing voters with disabilities a secure, independent, and accessible Vote Center experience. OCROV supports voters with disabilities by:

- Ensuring all selected Vote Centers meet accessibility requirements
- Using a voting system with current accessibility-supported technology
- Extending the ability to cast a ballot independently from home
- Providing virtual ASL interpretation at every Vote Center

To help facilitate the accessibility review of each Vote center, OCROV converted the California Secretary of State's Polling Place Accessibility Checklist into an electronic data gathering tool that can be used on mobile devices while out in the field. OCROV's Vote Center Accessibility Checklist is used to identify and assess Vote Centers.

To comply with accessibility requirements, the Vote Center Accessibility Survey is regularly reviewed and updated. The Accessibility Survey review includes an in-depth examination of paths of travel from public transportation, seeking sites with a maximum number of accessible parking spaces, and questions that differentiate between types of curb ramps.

Information for Services for Voters with Disabilities included in VIGs and VBM Instructions

§4005(a)(8)(B)(i)(IV)

The VIG includes information on how voters with disabilities can request assistance, Disability Rights California's Voting Hotline phone number, curbside voting information, and how to contact OCROV for any general questions. Additionally, the VIG specifies that a voter unable to mark a ballot may bring up to two individuals to assist with voting. The VIG also includes a postcard with prepaid postage for voters to request a remote accessible VBM ballot.

The VBM instructions inform voters of the availability of requesting election materials in an accessible format.

Accessible Information Posted to Website

§4005(a)(10)(l)(i)(IV), §4005(a)(8)(B)(ii)

The OCROV website provides information to all voters in an accessible format. Special attention has been given to the design of the website to ensure that it is responsive, compatible with screen readers, and easy to navigate.

The website provides voters with information relating to the election process, registering to vote, VCA legislation, and the Election Administration Plan (EAP). The website also provides information about services available to voters with disabilities, including:

- Vote Center and ballot drop box accessibility
- Ballot marking devices
- Curbside voting
- Resources for voters with disabilities
- Requesting a remote accessible VBM ballot

The website includes information on the types of services available to voters with disabilities, what services can be accessed at Vote Centers, and more. It also includes a list of Vote Centers and ballot drop boxes in an accessible format.

How a Voter with Disabilities may request a VBM, RAVBM, or Replacement Ballot

§4005(a)(5), §4005(a)(10)(l)(ii)

With the move to Vote Centers, a person with a disability can request a VBM, RAVBM, or replacement ballot via the website, through email, over the phone, in written form, or in person at the OCROV office. In addition to these options, voters will also be able to request a VBM or a replacement ballot in person at any Vote Center and request a RAVBM through the postage-paid postcard included with every VIG.

Remote Accessible Vote-By-Mail

§4005(a)(8)(B)(i)(IV)

Orange County registered voters with disabilities may request a downloadable ballot by connecting to the Remote Accessible Vote-By-Mail (RAVBM) system. RAVBM provides voters with disabilities the ability to request a VBM ballot to be sent electronically. The electronic ballot is downloaded to the voter's computer, marked using the voter's own assistive technology, and then printed. This ballot can then be returned in the same manner as any VBM ballot; through the mail, placed in a ballot drop box; or at any Vote Center. The RAVBM portal instructs voters to return the completed RAVBM ballot in the supplied return envelope in the VBM packet. Return instructions are also available in the VIG.

Type and Number of Accessible Ballot Marking Devices

§4005(a)(2)(B), §4005(a)(4)(D), §4005(a)(10)(l)(vi)(X)

All Orange County Vote Centers are equipped with a minimum of three accessible ballot marking devices with the option to expand the number of devices dependent on the voting room size and voter needs.

A voter can mark their ballot using the touch screen display, audio tactile device, or their own assistive technology. The accessible ballot marking devices provide voters with disabilities an independent voting experience. Ballot marking devices are arranged to allow all voters the opportunity to cast their ballot privately and independently.

Type and Number of Reasonable Modifications at Vote Centers

§4005(a)(6)(D), §4005(a)(10)(l)(vi)(X)

There are multiple types of reasonable modifications that are offered inside Vote Centers. Electronic check-in, a minimum standard of three accessible ballot marking devices and physical modifications are put in place to support voters with disabilities.

Electronic check-in allows voters with disabilities the option to check-in independently. The accessibility features on the ballot marking devices include screen-reading, magnification, and inverted colors for voters with visual disabilities. Magnifiers are

available upon request, and chairs are available at check-in stations and at the accessible voting units upon request. If a voter needs additional assistance, Vote Center employees are available to assist a voter as a visual guide through the voting room, or to read out any information they may not be able to see.

In addition to modifications upon request, each Vote Center is surveyed for accessibility. If needed, facilities may be provided with threshold ramps for short rises to enter rooms, cones to identify hazards, and mats to cover slipping hazards. Most facilities are asked to leave doors to the voting room open for accessibility. Occasionally, a facility is provided a ballot call device which a voter can use to request curbside voting without entering the Vote Center; this will depend on the terrain of the location.

Toll-Free Voter Phone Line

§4005(a)(10)(l)(vii)

The public is provided a toll-free voter phone line to direct voters to the accessibility features in order to ask questions and receive voting and election-related information. The toll-free phone number will be published on the OCROV website, public service announcements, and provided in media outreach and direct voter contact information including the VIG.

Voters that are deaf, hard of hearing, or speech-disabled may use the California Relay Service (CRS) by dialing 711 to use the telephone system via a text telephone (TTY) or other devices to call OCROV's Toll-Free Voter Phone Line. CRS supports the following modes of communication: TTY, VCO, 2LVCO, HCO, STS, VASTS, ASCII, or Voice.

Video Conferencing

OCROV provides American Sign Language (ASL) interpretation assistance via video conferencing at all Vote Centers. OCROV will continue to look for new opportunities to inform voters of the language assistance services available via video conferencing at each Vote Center. To help with publicizing these services to voters, OCROV may explore the possibility of adding more ASL assistance signage at Vote Centers, updating the language assistance card to include clearer ASL assistance information. Additionally, we will continue to work with our Community Partners to organize

outreach events for the Orange County deaf and hard of hearing community on the different accessible voting options that are available to voters.

Language Assistance Services

OCROV is nationally recognized as a leader in providing comprehensive and innovative language assistance services to voters. From having dedicated bilingual staff prepare culturally appropriate translations and maintaining an extensive event calendar, OCROV is committed to providing numerous opportunities for language communities to learn about the Vote Center model of voting.

Translated Reference Ballots and Language Assistance Card

§13400

Per California Elections Code §14201, OCROV is required to provide translated reference ballots at targeted precincts and a card indicating that translated reference ballots are available at targeted precincts.

The targeted precincts are identified, and the corresponding ballot types are translated by a contracted vendor per requirements under §13307. In the Vote Center model, translated reference ballots are available at every Vote Center and copies are available as a reference guide for voters who request it. In addition to receiving a translated reference ballot at a Vote Center, voters may also request a translated reference ballot by telephone, mail, or fax up to 10 days before Election Day.

Orange County provides an inclusive language assistance card, which not only lists the availability of translated reference ballots but all language services available at Vote Centers. Asian Americans Advancing Justice – Los Angeles described OCROV's language assistance card as "a best practice on how to provide language assistance signage for all counties."¹ Currently, the card can be found on the Voting Information Sign that is strategically placed adjacent to stanchions so all that voters pass the sign on their way to check in to vote. See page 58 in Appendices for a sample language assistance card.

¹ Advancing Justice 2018 Poll Monitor Report OC (Page 11). Asian Americans Advancing Justice – Los Angeles.

Language Assistance Services included in VIGs or VBM instructions and Website §4005(a)(8)(B)

Voters are notified of their ability to request translated election materials and language assistance services in the VIG and VBM instructions.

The website provides a complete list of language assistance services. Currently, OCROV utilizes ocvote.com/language to provide information on language assistance services and this webpage will be updated to reflect available language assistance services.

Bilingual Vote Center Staffing and Supported Languages

§4005(a)(10)(l)(vi)(IX)

OCROV determines which Vote Centers are located in or adjacent to a precinct that meets language requirements under the federal Voting Rights Act (VRA) for in-person language assistance. In addition, OCROV solicits public input regarding which Vote Centers are recommended to be staffed by individuals who are fluent in specific languages, pursuant to subdivision (c) of §12303 and §203 of the federal Voting Rights Act (VRA). Every effort is made to recruit and assign bilingual Vote Center staff to these Vote Centers.

At Vote Centers identified as not meeting language assistance requirements, voters will still have alternate options to receive effective language assistance such as translated written materials, assistance over a telephone call, and assistance through video conferencing.

Toll-Free Voter Phone Line and Multilingual Public Phone Bank

§4005(a)(10)(I)(vii), §4005(a)(10)(I)(i)(I)

Leading up to Election Day, OCROV operates a public phone bank that is staffed with bilingual operators in federally required languages to assist voters with questions before, during, and after an election to provide in-language assistance. Voters may also call a toll-free voter phone line to ask questions and receive voting and election-related information. The toll-free phone number is 1-888-628-6837, which is published on OCROV's website, public service announcements, and provided in media outreach and direct voter contact information including the VIG. There will be one toll-free number to serve the public, including language communities.

Video Conferencing

To supplement in-person support to voters requesting language assistance, OCROV offers video conferencing to provide multilingual assistance at all Vote Centers. This ensure that voters needing language assistance are able to interact with trained bilingual staff who can verbally and visually guide the voter to meaningfully participate in the voting process, even if there is not bilingual staff at the Vote Center.

Supported languages include:

- Spanish
- Vietnamese
- Chinese
- Korean
- American Sign Language (ASL)

Voting Technology

Electronic Poll Books

Electronic poll books directly replace paper rosters and provide a mechanism to ensure the efficient and secure processing of eligible voters at any Vote Center location. They accomplish secure processing by having a protected and encrypted real-time batched connection to the election database to send and receive voter status updates.

An electronic pollbook solution chosen by OCROV is a combination of tablet hardware devices and vendor proprietary software. The voter information resides in and is used by the electronic poll book, and is password protected and encrypted whether the data is at rest or in transit. This highlights just one of the many security features of the OCROV's electronic pollbook solution. OCROV has selected and contracted with a vendor to provide electronic poll books for the Vote Center operations.

The electronic pollbooks used in 2020 allowed the OCROV to process voters quickly, while ensuring every voter received the correct ballot type. It also dramatically reduced the number of provisional ballots that were cast. In the November 2018 General Election, 117,188 provisional ballots were cast. After the implementation of Vote Centers with electronic pollbooks, the number of provisional ballots cast in the November 2020 Presidential Election was only 3,417.

Voting System

OCROV replaced its voting system for use in the elections beginning in 2020. In addition to the requirement that voting systems must be certified by the State of California, internal strict extensive security requirements have been developed and were included in the Request for Proposals for procurement of a new voting system. The internal requirements covered technical aspects of the voting system as well as organizational requirements for responsive vendors. Encrypted data, the ability to detect tampering, and the ability to meet security standards are examples of the requirements that have been included in the Request for Proposal for any new voting system.

OCROV entered into a contract with Hart InterCivic as a voting system solution for Vote Center operations and equipment was procured in 2019.

The new voting system proved to be an effective system for the Vote Center voting model. OCROV was able to process a large number of in-person voters at Vote Centers, while also being able to handle the large volume of returned vote-by-mail ballots.

Voting Security

OCROV has aggressively pursued security measures to protect the integrity of our elections by paying attention to issues related to ballot integrity, voter registration systems, and ensuring the eligibility of voters. Although threats are constantly changing and incidents are unique, there are best practices to prepare for threats and incidents. OCROV continues to improve current systems and implement new sets of standards. OCROV has implemented physical and cybersecurity controls while incorporating extensive training for employees. There are also classified security measures in place to ensure that these mitigation efforts are not compromised.

Security and Contingency Plans to Ensure Prevention of Disruption

§4005(a)(10)(I)(vi)(VIII)(ia)

OCROV has a multi-pronged approach to ensure prevention of disruption to election operations through partnerships, internal controls, and procedures.

State, Federal, Local Partnerships

We have developed a relationship with our Orange County's Chief Information Security office, and the Orange County Intelligence Assessment Center (OCIAC). We also have a direct relationship with Department of Homeland Security (DHS), Federal Bureau of Investigation (FBI) and the Election Assistance Commission (EAC).

There is increased collaboration around election cycles before and after the election. We enhance our security awareness and communication, including regular meetings with the County's security office, DHS, and the FBI.

Internal Controls

From a technical perspective, OCROV includes a multi-layered approach to ensure the data remains encrypted and secured at all times. Devices that have Federal Information Processing Standard (FIPS) certified components will be utilized and data will remain encrypted from point-to-point at all times. Physical security is also a consideration when choosing a location to host a vote center. Only facilities that provide adequate physical security will be chosen.

Mobile device management allows total control of securing and enforcing policies to tablets, smartphones, and other devices. Mobile device management allows for the

ability to remotely wipe a device, use password enforcement, enable application whitelisting or blacklisting, use data encryption enforcement, control application distribution and software updates, and more.

Every Vote Center has a smartphone for notification in the event of an emergency. Vote Center staff also receive a handbook on what procedures to follow should there be an emergency. Voting equipment has battery back-up in the event there is a loss of power.

Procedures, Methods and Standards

Chain of custody procedures are used as an administrative control as part of the overall strategy to secure election operations. The chain of custody procedures ensures that physical tracking of voting system equipment is in place.

Voting system components are secured within a secure location requiring badge access until deployed for the election. Voting devices are placed in numerically sealed transportation containers. Memory devices are numerically sealed in the voting systems. All voting equipment is tracked when deployed and returned to the OCROV.

Election personnel sign chain of custody documents for voting equipment at distribution locations. Election personnel and vote center staff will be required to check the security seals periodically and report any broken seals or suspicious activity. An OCROV representative signs for equipment upon its return. Voting equipment is inventoried and placed in a secured location.

Security and Contingency Plans to Ensure Continuation of Election in Event of Disruption

§4005(a)(10)(I)(vi)(VIII)(ib)

OCROV has taken extensive preparations to prevent disruptions in the elections process; however, it is equally important to be prepared to respond to the real possibility of an incident or disruption. This section outlines the steps taken to be prepared to continue elections operations in the event of a disruption.

Vote Center Response During the Voting Period

During the voting period, election support personnel are located throughout Orange County, ready to respond to any incident. These field personnel have replacement voting equipment and supplies and are trained to handle technical issues. The response time of these support personnel will typically be less than 15 minutes. Field personnel can also respond to loss of power at a Vote Center location with mobile electric generators. Vote Center employees have emergency contact information, including a dedicated helpdesk that can quickly resolve issues, or dispatch a member of the support team in the field.

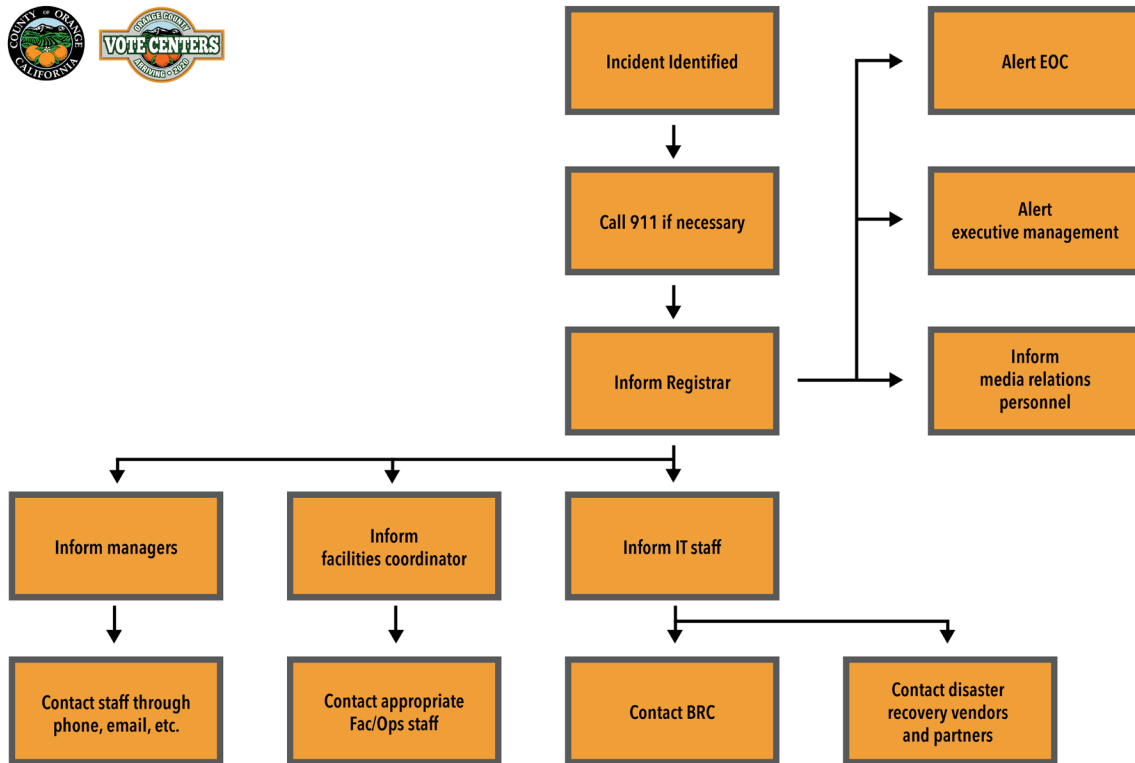
All Vote Center equipment functions independently and is implemented with the ability to operate without connection to the Internet. Each piece of voting equipment does not directly communicate with other voting equipment, and if one piece of equipment stops functioning, all the other voting equipment continues to operate.

Incident Response Plan

OCROV has an in-depth Incident Response Plan that can be used in the event of a cybersecurity incident, outage or attack. This plan provides a systematic way to identify, address and recover from an incident.

Critical processes and their associated information technology dependencies have been identified to ensure ongoing elections operations in the event of a disruption. It provides a framework for determining critical business processes and enabling the organization to survive the loss of part or all our operational capabilities.

The communications flowchart below depicts how information will be disseminated to voters, staff, and media outlets during a disruption. Delegations of authority have been set to avoid misinformation, make policy determinations, and decisions for functional areas of the department as appropriate.



A comprehensive Incident Response Plan has been created and has been updated under the Vote Center model, outlining response strategies for a variety of possible scenarios.

Methods and Standards

§4005(a)(10)(I)(iv)

The purpose of the Incident Response Plan is to allow elections operations to continue in the event of a disaster, an incident or a service disruption. By identifying the procedures for critical processes, communications, and alternate facilities, most foreseeable disruptions to elections operations can be mitigated.

Critical Processes

The plan identifies all critical processes required to run an election. Each of these critical processes is analyzed, and the technical dependencies for each of those processes are determined. For each of those technical dependencies, a recovery strategy is defined, including the restoration of required data. As an example, providing Vote Center support is one of the many critical election processes identified. In order to provide support to Vote Centers, employees need access to a database with Vote Center information and contact information. Therefore, the Incident Response Plan requires that there is a backup of that database and a strategy to be able to restore the data in a reasonable amount of time to continue operations.

Communications

The Incident Response Plan also addresses modes of communication, and how communication can continue during a disruption. This includes alternate modes of communication in the case that primary systems fail. Responsibilities are assigned for disseminating information, and key stakeholders with whom it will be required to communicate in the event of a disruption. The process that is disrupted determines with whom the communication needs to occur. For example, some disruptions will require communication to only Vote Center staff, while other disruptions may require communication to the media and general public.

Alternate Facilities

Alternate facilities are designated for local disasters, such as fires, floods, or other situations that would now allow access to our main facilities. Mobile voting units could be deployed to serve as supplemental or replacement voting locations.

Fiscal Impact

Estimates of Short-Term and Long-Term Savings

§4005(a)(10)(I)(v)

The following tables show a comparison of budgeted costs and actual costs. 2020 was a particularly unique year with the purchase of new voting equipment and increased costs incurred as a result of COVID-19. Despite these challenges, the estimations proved to be excellent as the budgeted costs and actual costs were very similar.

	Fiscal Year 2017/2018	Fiscal Year 2018/2019	Fiscal Year 2019/2020 (proposed budget)	Fiscal Year 2019/2020 (actual)
2018 Voting System	\$595,000	\$595,000	\$50,000	\$0
New Voting System			\$15,395,592	\$15,344,496

New voting system costs for both polling place and Vote Center elections:

Election Type	# Sites/# Accessible Units (includes growth)	One-time Equipment Purchase (estimated)	One-time Equipment Purchase (actual)
Polling Place Model	900 / 1200	\$23,400,000–\$40,000,000	\$0
Vote Center Model	188 / 940	\$8,537,550–\$14,177,550	\$16,935,151
Cost Difference		\$14,862,450-\$25,822,450	

VCA Cost Projections & Savings through 2025:

	Increased Cost 2018 vs 2020	Increased Cost 2018 vs 2020	Primary	General	Primary	General
	Primary Election	General Election	FY 21-22	FY 22-23	FY 23-24	FY 24-25
Added Costs	\$4,842,067	\$4,734,470	\$5,197,897	\$5,119,237	\$5,538,929	\$5,434,060
Misc. Reduced Costs*	(\$1,447,214)	(\$1,381,732)	(\$1,447,214)	(\$1,381,732)	(\$1,447,214)	(\$1,381,732)
Total	\$3,394,853	\$3,352,738	\$3,750,683	\$3,737,505	\$4,091,715	\$4,052,328

*Miscellaneous reduced costs represent the cost savings realized by moving to the Vote Center Model. These reductions align with estimates in the Registrar's 2018 Vote Center Model cost projection. It is important to mention, many of the increased costs shown above are a result of factors that would have been present in a polling place election model as well. Impacts of labor negotiations, increase in voter registration and the added cost increase to services and supplies would be found in any voting model.

Shifts in Voter Behavior & Operational Preparedness

During the September 14, 2021 California gubernatorial Recall Election, OCROV saw a notable rise in voter misinformation being promulgated by several special interest groups throughout Orange County. As a result of this rise in voter misinformation, OCROV fielded an increased number of calls from voters who sought to clarify misinformation they had previously received. In the lead-up to Election Day, OCROV also saw a significant rise in the number of voters who opted to wait in line at a Vote Center to simply drop-off their VBM ballot. On Election Day, Vote Centers across Orange County experienced longer than usual wait times as more voters chose to wait until Election Day to visit a Vote Center and cast their ballot in-person. OCROV will continue to monitor these recent shifts in voter behavior to ensure that the administration of elections under the Vote Center model continues to meet the needs of all Orange County voters.

Overview of Voter Education and Outreach Plan

§4005(a)(10)(l)(i), §4005(a)(10)(l)(i)(VI)

OCROV is committed to cultivating new relationships with community organizations and stakeholders, as well as strengthening our existing relationships with community partners during the transition to the Vote Center model.

Moving forward, OCROV will continue to participate in events that have been historically attended, as well as develop creative and more effective ways of communicating to voters. The Voter Education and Outreach Plan (VEOP) will highlight outreach events the organization will coordinate and attend, outline messaging strategies that will increase our presence in the community, and detail how resources will be allocated more efficiently through the analysis of key data points.

Summary of Goals

- Vote Center workshops
- Large community engagement events
- Small-to-medium community engagement events
- Pop-up voting in major elections
- Partnerships with colleges and universities
- Partnerships with high schools
- Direct voter contacts
- Multilingual videos and radio ads
- Increased social media presence

Community Partners

§4005(a)(10)(l)(i)(III)

Successfully maintaining a community outreach program includes maintaining established partnerships with community-based groups/organizations. OCROV meets with dedicated individuals from various organizations across Orange County including: advocacy groups, civic groups, citizen leagues, senior centers, churches, and other individuals. These relationships have begun as far back as 1998 and the number of organizations continues to grow each year.

Community Election Working Group

The Community Election Working Group (CEW) is a diverse 25-member community advisory board committed to making sure elections are open and accessible. Since its inception in 2009, quarterly CEW meetings have been conducted which have cultivated valuable input from the community regarding the elections process. The advisory group also provides a forum for OCROV to update the community as a whole on election issues and promote community involvement.

Membership includes, but is not limited to, representation from the Latino community, Asian community, City Clerks, League of Women Voters, Republican Party, Democratic Party, alternative parties, senior community, veterans community, disabled community, youth population (voters ages 18 to 25) and at-large positions.

CEW Subcommittee Voting Accessibility Advisory Committee & Language Accessibility Advisory Committees

§4005(a)(9)(A), §4005(a)(9)(B), §4005(a)(10)(l)(i)(I)

Implemented in early 2017, the CEW Subcommittee Voting Accessibility Advisory Committee (VAAC) and the CEW Subcommittee Language Accessibility Advisory Committee (LAAC) are two independent committees of the CEW that designated to focus on the needs of voters with disabilities and language minority communities.

The mission of the LAAC is to advise and assist the OCROV with implementation of federal and state laws relating to language access, so that all voters can meaningfully participate in the voting process. The LAAC also provides recommendations identifying and prioritizing activities, programs, and policies to ensure equal access to the ballot. The responsibilities of the committee include the following: providing expertise on language accessibility issues; promoting language accessibility initiatives; and responding to the OCROV's questions regarding language support.

The mission of the VAAC is to advise and assist the OCROV with providing services to voters with accessibility needs and meeting state and federal requirements, so all opportunities to provide equal access are explored. The VAAC also provides recommendations identifying and prioritizing activities, programs, and policies to ensure voters with disabilities can independently cast a ballot. The responsibilities of the committee include the following: providing expertise on accessibility matters; incorporating accessibility procedures into operations; and providing feedback to the

OCROV regarding accessibility standards and outreaching to voters with accessibility needs.

CEW and subcommittees LAAC and VAAC meeting agendas and a list of members and supporting organizations for each group can be found starting on page 65 in Appendices. Language community partners and disability community partners are listed starting on page 56 in Appendices.

Voter Education Workshops for Language Communities

§4005(a)(10)(l)(i)(VI)(ia)

OCROV hosts multiple voter education workshops to provide Vote Center and election information for each of Orange County's federal and state required languages. In 2021, these languages include Spanish, Vietnamese, Chinese, Korean, Farsi (Persian), Gujarati, Hindi, Japanese, and Tagalog.

Each workshop includes information about the Vote Center model, voting equipment, language assistance services, ballot drop-off options, and methods to request translated election materials. Information about the workshops is announced at least 10 days in advance of the date and is shared with the LAAC and community organizations.

OCROV partners with CEW LAAC and its language community partners to determine the number of workshops, workshop dates, times, and locations, and what materials to distribute to best serve voters with language needs.

Methods to Identify Language Communities

§4005(a)(10)(l)(i)(V)

OCROV utilizes the number of voters who request language assistance through voter registration forms. Voters may also notify OCROV of their language preference via telephone, fax, email or online to update their language preference. Sources such as the United States Census Bureau help identify areas where there may be communities that have limited-English proficiency and may need language assistance.

In addition, OCROV receives input from language community partners on the geographic distribution of where language communities exist in Orange County.

Toll-Free Voter Phone Line and Multilingual Public Phone Bank

§4005(a)(10)(l)(vii), §4005(a)(10)(l)(i)(I)

Leading up to Election Day, OCROV operates a public phone bank that is staffed with bilingual operators in federally mandated languages to assist voters with questions before, during, and after an election to provide in-language assistance. Language voters may also call a toll-free voter phone line to ask questions and receive voting and election-related information. The toll-free phone number is 1-888-628-6837 and it has been activated. It will be published on OCROV website, public service announcements, and provided in media outreach and direct voter contact information including the VIG. There will be one toll-free number to serve the public, including language communities.

Voter Education Workshop for Disability Community

§4005(a)(10)(l)(i)(VI)(ib)

Prior to the final publication of the EAP, OCROV hosted multiple voter education workshops to increase accessibility and participation of eligible voters with disabilities. The workshops include education about the Vote Center model, voting equipment demonstrations when possible, the accessibility of the voting equipment, ballot drop-off information, and options for obtaining a remote accessible vote-by-mail ballot (RAVBM).

OCROV partners with CEW VAAC and its disability community partners to determine the number of workshops, workshop dates, times, and locations, and what materials to distribute to best serve voters with disabilities. Possibilities include developing instructional and informational videos on topics such as RAVBM and available services for voters with disabilities at Vote Centers.

Information about the workshop events is announced at least 10 days in advance of the date and it is shared with the VAAC and disability community organizations.

Remote Accessible Vote-By-Mail Outreach

§4005(a)(10)(l)(i)(II)

OCROV implemented an outreach plan to inform voters on the availability of RAVBM in partnership with CEW VAAC in 2020. For the November 3, 2020 Presidential General Election, over 6,000 voters accessed the RAVBM system and nearly 2,000 voters

downloaded a ballot. OCROV continues to develop different outreach strategies to increase the awareness of these services in an effort to increase usage.

High Schools

OCROV developed strong relationships with high schools through its award-winning MyBallot program. The MyBallot program provides high school students a history of voting and interactive opportunities to learn about ballot generation, administering a student election with official voting equipment, and overseeing tabulation of election results. Since its inception in 2010, over 4,000 students from 22 high schools participated and gained a better understanding of the election process and voting.

The MyBallot program was developed with the traditional polling place model and will be reimaged with the transition to the Vote Center model. OCROV continues to leverage its existing relationships with high schools to provide pre-registration opportunities, information on how elections are conducted under the Vote Center model, and voter registration training.

Additionally, OCROV participates in the biannual High School Voter Education Weeks which is coordinated by the SOS across all California counties. OCROV works directly with educators to provide presentations on the history of voting, walking students through online registration, and answer questions about voting and elections.

Colleges and Universities

There are approximately 28 colleges and universities with campuses in Orange County. OCROV has built relationships with colleges and universities through hosting tabling events on campus where voting and election information is provided, voter registration training to student organizations, and speaking engagements during classes and at student club meetings.

Additionally, OCROV has brought its Mobile Community Engagement Unit and Pop-Up Mobile Voting Unit to college and university campuses with redesigned marketing collateral to draw the attention of students, faculty, and staff. Examples include hosting Pop-Up Mobile Voting at Saddleback College, Golden West College, California State University at Fullerton (CSU Fullerton), and University of California at Irvine (UC Irvine) in past election years.

Several colleges and universities have now hosted a Vote Center site and/or ballot drop box on campus since the 2020 election cycle. For future elections, OCROV will continue to explore similar opportunities with other local colleges and universities.

Business Partners

OCROV partners with business associations and chambers of commerce to provide speaking engagements, voter registration training, and informational tabling at meetings. Past collaborative efforts include bringing the Pop-Up Mobile Voting Unit to the Ladera Ranch Chamber of Commerce's Harvest Festival and Farmers Market and communicating updates related to voting at events hosted by local chambers of commerce.

Speaking Engagements and Community Events

Speaking Engagements

The speaking engagement component of OCROV's community outreach program is an integral part of outreaching to voters of many different backgrounds throughout Orange County. Covering a diverse and expansive area, the program aims to achieve the following goals:

- Educate voters on the electoral process, including the transition to the Vote Center model
- Provide information on special programs, online features and voter registration
- Network and pursue collaborative opportunities

The focus is to provide small and large-scale communication to the community. Speaking engagements include attending various community meetings and events and conducting non-partisan, neutral, and culturally sensitive presentations.

As many groups exist within Orange County, speaking engagements allow OCROV to promote services, build partnerships, and interact with various communities. Targeted groups have included, but are not limited, to the following:

- Community groups
- Rotary clubs
- Parent/Teacher Clubs
- Churches
- Universities
- Student organizations
- Citizenship classes
- Professional associations
- Public service agencies

- Cultural clubs
- Non-profit organizations
- Youth groups
- Service organizations
- Senior citizen centers

Voting System Demonstrations

Following a detailed and transparent procurement process, a new voting system was approved by the Orange County Board of Supervisors in September 2019 and replaced the previous 15-year old voting system. The voting system is certified by both the U.S. Election Assistance Commission and the Secretary of State and offers new features to make voting easier and more accessible to voters.

To raise awareness and provide for public education, OCROV hosted over 20 voting system demonstrations in the 2020 election cycle where the public was able to view and interact with the new voting system. Due to COVID-19 health and safety guidelines, voting system demonstrations have been put on pause and may resume should when it is safe to do so.

Community Events

To maintain OCROV’s presence in the community, OCROV continues to focus its community outreach attendance to both small-to-medium and large-scale events. OCROV will be present at these events to provide information about the Vote Center model, voting, and other election information. Staff will engage the public, answer questions, and assist in filling out voter registration forms. By participating in these events, OCROV will have access to thousands of individuals in communities throughout Orange County. A list of potential community events being pursued is available on page 95 in Appendices.

Elected Officials and Government Agencies

OCROV has leveraged existing working relationships with government agencies and elected officials to raise public awareness of the Vote Center model of voting.

In 2020, OCROV entered in collaborative partnerships with government agencies, including hosting a Vote Center or ballot drop box at a public agency’s location, making informational materials available at physical sites and online on websites, and relaying Vote Center and voting information to constituents.

OCROV hosts regular meetings with City Clerks to strengthen the ongoing partnerships to relay information and support voters between OCROV, elected officials, and government agencies.

Collaborative Community Outreach

Partnership with 2-1-1

OCROV has a partnership with 2-1-1 Orange County to distribute voting and election information. 2-1-1 Orange County is a nonprofit 501(c)(3) organization offering a comprehensive information and referral system for Orange County residents to receive community health and human services and support.

2-1-1 Information and Referral Specialists receive Vote Center information, are able to locate the nearest Vote Center or ballot drop box for a voter and refer voters to OCROV for additional assistance.

Partnership with the Orange County Transportation Agency

The Orange County Transportation Agency (OCTA) is the official provider of countywide public transportation in Orange County. OCROV worked in partnership with OCTA to wrap public buses and bus stop benches with Vote Center marketing and can utilize this marketing strategy for future elections. By utilizing this strategy, the opportunity not only raises the awareness of Vote Centers among voters who utilize public transportation but also any individual in the vicinity of a public transportation vehicle or stop.

Social Media Kit

A social media kit has been developed for government agencies to offer informational materials at a variety of public agency locations. Translated marketing materials will be available and provided to government agencies as well.

The package will include, but not be limited to:

- Brochures
- Flyers
- Posters
- Frequently Asked Questions
- Map and List of Vote Center and Ballot Drop Box Locations

Community Engagement Suite

General Media Plan

§4005(a)(10)(l)(i)(I)

To inform Orange County voters of the Vote Center model, OCROV has taken an expansive approach to reach as many voters as possible, multiple times. By using a blend of social media, direct mail, print, broadcast, video, online, and radio approaches, we saturated the spectrum of media outlets for voters to increase the potential for a voter to see Vote Center informational and marketing materials.

Media Partners

§4005(a)(10)(l)(i)(II), §4005(a)(10)(l)(i)(VIII)

OCROV provides press releases, video content, and social media content for mass distribution and publication to existing media partners and seek out other trusted media sources to relay Vote Center communication. Accessibility options, methods to request an accessible ballot, Vote Center and ballot drop box locations, other general election information and other voting updates are shared with media partners. For a list of media partners, please see page 61 in Appendices.

Additionally, Registrar of Voters Neal Kelley often appears on local and national media to speak as an elections expert and provide the perspective of an election official. These types of opportunities are utilized to specifically support communicating changes on a macro level.

Language Media Partners

§4005(a)(10)(l)(i)(I)

Orange County's diverse communities receive news updates and information from a variety of sources, including language media outlets. OCROV has dedicated full-time staff to serve as liaisons to language communities and have developed strong relationships with language media partners in communities that speak Spanish, Chinese, Vietnamese, Korean, Farsi (Persian), Japanese, Hindi, Gujarati, and Tagalog. Information on the upcoming election and the toll-free voter assistance hotline will be shared with language media partners. For a list of language media partners, please see page 63 in Appendices.

Direct Voter Contacts

§4005(a)(10)(l)(i)(X)

OCROV sends two to four direct mailers to advise all registered voters of the availability of OCROV's toll-free voter assistance hotline and the changes to elections and voting. The mailers are designed to catch the attention of the voter with Vote Center branding and messaging. The mailers also provide information such as voting options, Vote Center and ballot drop box locations and hours, or when to expect a Voter Information Guide (VIG) or vote-by-mail (VBM) ballot.

Postage-Paid Postcard for Requesting Materials in an Alternate Language or an Accessible Format

§4005(a)(8)(B)(iii)

All registered voters receive a postage-paid postcard in their VIG to request a VBM ballot in an accessible format and to request election materials in alternate languages per §14201 of the California Elections Code and §203 of the federal Voting Rights Act. Instructions will be included in the VIG and on the OCROV website for completing and returning the postcard.

Public Service Announcements

§4005(a)(10)(l)(i)(VIII), §4005(a)(10)(l)(i)(IX)

OCROV developed a suite of over 70 videos of varying lengths and themes (translated in all required languages). The videos are informational as well as instructional such as notifying voters of the date of the election and different options for returning a ballot. Videos promote a toll-free, accessible voter hotline to ask questions and receive voting and election-related information.

Filming took place at various sites throughout Orange County, showcasing a sample Vote Center layout and external view of Vote Centers and ballot drop boxes.

The videos are open-captioned and available in accessible formats to be inclusive for voters who are deaf or hard of hearing, and voters who are blind or visually impaired. Additionally, videos will be accessible in Spanish, Vietnamese, Chinese, Korean, Tagalog, Japanese, Gujarati, Hindi, and Farsi (Persian). Content is provided to general

media partners and language media partners. Please see page 61 in Appendices for a list of general media partners and page 63 for language media partners.

Social Media

OCROV uses social media to attract new voters and to provide information to existing voters about updates on critical deadlines, events, voting tips, and Vote Center and ballot drop box locations.

OCROV utilized Facebook to target specific populations in Orange County such as younger voters between the ages of 18-25, members of the public who follow language media outlets, and individuals who are interested in accessibility advocacy.

Below are social media strategies to achieve the overall goals of informing and educating voters about Vote Centers:

- To expand OCROV's presence on Twitter, Facebook, Instagram, and YouTube
- To publish highly-targeted and site-specific content on a regular schedule
- To engage meaningfully with active community members through social media
- To stimulate and nurture genuine discussion on social media
- To enhance the video content currently on OCROV's YouTube channel to be functional to Vote Center outreach, education, and training

Website

§4005(a)(10)(I)(i)(IV)

The OCROV website (ocvote.com) is utilized heavily as the main source of Vote Center information and materials for the public. Information on the OCROV website is in accessible formats and is publicly available. This includes the EAP, methods to request an accessible VBM ballot, the option to use an accessible voting device and how to use it, lists of Vote Centers and ballot drop boxes, and other information related to the VCA.

The website is also translated into Spanish, Chinese, Vietnamese, and Korean, so voters with limited-English proficiency in these languages will still be able to access Vote Center information. It is also compatible with assistive technology for voters with disabilities.

Vote Center Newsletter

Starting in Spring 2019, OCROV launched a Vote Center newsletter geared towards providing planning updates, outreach information, and opportunities to share public input. Past newsletters included survey data analysis, information about Vote Center workshops, and methods to provide Vote Center and ballot drop box site suggestions. There are 6,500+ subscribers to OCROV newsletters.

See page 108 in Appendices for a sample Vote Center newsletter.

Mobile Voting

OCROV continues to seek opportunities to bring mobile voting to voters in unique locations and geographic areas where voters might otherwise have limited access to in-person voting options. OCROV's mobile voting unit is a full-service, easy to deploy, mobile Vote Center that can service any area in Orange County. As is the case with any other Vote Center in Orange County, the mobile voting unit is secure and equipped to support voters with language and accessibility needs.

Community Engagement Mobile Outreach Vehicle

To conduct more effective and visible voter education, OCROV utilizes a custom-made Community Engagement Mobile Outreach Vehicle. The mobile outreach vehicle is fully accessible and equipped with interactive voting displays on board. It gives all the opportunity to experience the democratic process including on-the-go voting.

Since 2004, our mobile fleet has been showcased at numerous community events, parades and outdoor venues. Moreover, these vehicles have been officially and effectively utilized as a fully contained voting location and are available throughout the voting period as a backup Vote Center. The units were the first of their kind and have been replicated in areas across the country.

Pop-Up Mobile Voting Unit

OCROV continues to develop innovative solutions in response to voter trends and inspiration was taken from pop-up stores and restaurants that often draw positive public attention in areas with high traffic. Ultimately, the goal is to garner the interest of the public at events by using proven strategies, such as simple design principles and targeted signage that can be changed depending on the event.

The accessible mobile unit includes a wheelchair lift and has a custom wrap to match the marketing and branding plan OCROV has undertaken across the entire agency. The mobility of this platform promotes voter engagement and participation and allows OCROV to reach underrepresented populations and high-density locations to provide voting opportunities, Vote Center information, and improve the voter experience.

The Pop-Up Mobile Voting Unit will be utilized in future election cycles. Locations will be balanced between opportunities to reach geographically isolated voters and high-impact events to reach many voters. Voters will be notified in the VIG and VBM instructions of any mobile voting opportunities. Details such as locations and dates and hours of operations will be published in the VIG and website at ocvote.com.

See page 107 for images of OCROV's mobile fleet.

Projected Budget for Voter Outreach

§4005(a)(10)(I)(i)(VII), §4005(a)(10)(I)(i)(VII)

Voter Education and Outreach Funding and Comparison to Past Budgets

Activity	Jun 2018	Nov 2018	March 2020	March 2020
	Polling Place	Polling Place	Vote Center	Vote Center
	Actual Costs	Actual Costs	Budget	Actual Costs
Advertising	\$38,634	\$111,041	\$1,500,000	\$1,580,302
Newspaper Legal Ads			\$50,000	\$36,765
Misc. Advertising			\$84,945	\$31,325
Outreach	\$124,342	\$16,182	\$500,000	\$985,830
Misc. Outreach Operations			\$45,000	\$45,428
Voter Outreach events			\$10,000	\$1,449
Secretary of State Outreach Grant/Contract Funding Source			\$1,875,000	\$2,566,132

Activity	Nov 2020	Nov 2020	June 2022
	Vote Center	Vote Center	Vote Center
	Budget	Actual Costs	Budget
Advertising	\$100,000	\$1,484,416	\$100,000
Newspaper Legal Ads	\$40,000	\$13,541	\$40,000
Misc. Advertising		\$22,654	
Outreach		\$783,148	
Misc. Outreach Operations	\$45,000	\$116,823	\$45,000

Voter Outreach Events	\$10,000	\$0	\$10,000
Secretary of State Outreach Grant/Contract & Other Funding Source	\$0	\$2,393,704	\$0

Appendices

Public Meetings

To be inclusive of targeted communities, language assistance was provided at select workshops and particular workshops were promoted to the disability community.

Targeted Community	Number of Workshops
Voters with Disabilities	1
Spanish	1
Vietnamese	1
Korean	1
Chinese	1
Tagalog	1
Farsi (Persian)	1
Gujarati	1
Hindi	1
Japanese	1
LAAC/VAAC	2
Public Hearing	1

A full schedule of the Vote Center workshops is provided in the comprehensive Vote Center workshop flyer below.



ORANGE COUNTY VOTE CENTERS CALIFORNIA

VOTE CENTER PUBLIC WORKSHOPS

Join us to learn more about voting in Orange County!

JULY 2021

THURSDAY, JULY 15, 2021 4:00 PM - 5:30 PM Public Workshop - Vietnamese Community ①	TUESDAY, JULY 20, 2021 4:00 PM - 5:30 PM Public Workshop - Japanese Community	THURSDAY, JULY 22, 2021 7:30 PM - 9:00 PM Public Workshop - Chinese Community ②	MONDAY, JULY 26, 2021 2:00 PM - 3:30 PM Public Workshop - Disability Community
THURSDAY, JULY 29, 2021 12:00 PM - 1:30 PM Public Workshop - Gujarati Community	THURSDAY, JULY 29, 2021 4:00 PM - 5:30 PM Public Workshop - Tagalog Community		

AUGUST 2021

WEDNESDAY, AUGUST 4, 2021 6:00 PM - 7:30 PM Public Workshop - Hindi Community	THURSDAY, AUGUST 5, 2021 6:00 PM - 7:30 PM Public Workshop - Spanish Community ③	MONDAY, AUGUST 9, 2021 6:00 PM - 7:30 PM Public Workshop - Persian Community	TUESDAY, AUGUST 10, 2021 1:00 PM - 2:30 PM Public Workshop - Korean Community ④
---	--	--	---

All public workshops will be conducted virtually via Zoom.
Please visit ocvote.com/eap or facebook.com/OCROV for zoom links and more information.

Workshops conducted in other languages: ②Chinese ④Korean ③Spanish ①Vietnamese

 If you require accommodations, please call **Imelda Carrillo** at (714) 567-5039 or email Imelda.Carrillo@rov.ocgov.com at least 4 business days in advance.

 **ORANGE COUNTY REGISTRAR OF VOTERS**
ocvote.com/eap

Sample Speaking Engagements and Community Events

Sample Speaking Engagements and Community Events		
Event Name	City	Host Organization
2019 Orange County Lantern Festival	Costa Mesa	Orange County's Pacific Symphony and South Coast Chinese Cultural Center
Citizenship Ceremonies - March 2019 (1)	Anaheim	USCIS

Sample Speaking Engagements and Community Events		
Citizenship Ceremonies - March 2019 (2)	Anaheim	USCIS
First Annual - Aging Together - Health and Resource Fair AASCSC	Santa Ana	Orange County Asian and Pacific Islander Community Alliance (OCAPICA), and Asian American Senior Citizens Service Center (AASCSC)
6th Annual Persian New Year Festival	Irvine	Iranian-American Community Group of Orange County (IAC Group)
Laguna Niguel High School Job & College Fair	Laguna Niguel	Laguna Niguel High School
Persian New Year Picnic Day	Irvine	Network of Iranian-American Professionals of Orange County (NIPOC)
Los Amigos of OC Meeting	Anaheim	Los Amigos of OC
2019 FoCE Conference	Sacramento	Future of California Elections (FoCE)
VIAN High School Involvement Meeting	Irvine	VIAN, Welrvine
City of Westminster 2019 Spring Festival	Westminster	Westminster City
Katella High School Voter Education Weeks	Anaheim	Katella High School
Pacifica High School Civics Class Presentations	Garden Grove	Pacifica High School
Korean American Grassroots Conference Regional Seminar	Irvine	Korean American Grassroots Conference
Earth Day Event at Golden West College	Huntington Beach	Golden West College
Achieve Better Communication (ABC) Meeting	Tustin	Achieve Better Communication
Northwood High School Voter Education Weeks	Irvine	Northwood High School
Beckman High School Meet the Professionals Fair	Irvine	Beckman High School

Sample Speaking Engagements and Community Events		
Irvine Republican Women Federated Meeting	Irvine	Irvine Republican Women Federated
SOKA International Festival	Aliso Viejo	SOKA University
Cinco de Mayo Fiesta Anaheim	Anaheim	Fiesta United, Inc.
14th Annual AAPI Heritage Month Celebration	Bellflower	Southern CA Edison
State of the Community	Fullerton	Fullerton Collaborative
"72nd California LULAC Annual State Convention" -Building Bridges for Unity	Garden Grove	LULAC
Vesak Festival - Buddha's Birthday Celebration	Garden Grove	Giac Ly Buddhist Monastery
Korean American Chamber of Commerce of Orange County Introduction	Garden Grove	Korean American Chamber of Commerce of Orange County
Orange County Asian Chamber Leadership Mixer	Costa Mesa	Asian Business Association of Orange County (ABAOC)
Voice of Change	Anaheim	OC Health Care Agency (OCHCA) and Orange County Asian and Pacific Islander Community Alliance (OCAPICA)
VIAN School Year-End Meeting	Irvine	VIAN
2019-06-02 Together We Will OC Voter Registration Training	Irvine	Together We Will OC
KUCI OC Spotlight Talk Radio Show		KUCI
Annual Orange County Hiring Fair	Costa Mesa	Michelle Steel, Supervisor, 2nd District Orange County Board Of Supervisors And KACC Foundation
Peace & Justice Ministry Voter Registration Presentation	Santa Ana	Volunteers of the Peace & Justice Ministry at the Christ our Savior Parish.
AASCSC's 30th Anniversary and Dragon Boat Festival Celebration	Santa Ana	Asian American Senior Citizens Service Center (AASCSC)

Sample Speaking Engagements and Community Events		
Annual Filipino-American Lawyers of Orange County Membership Meeting and FACCOC Mixer	Newport Coast	Filipino-American Lawyers of Orange County (FLOC)
Tabling Sunday Mass Christ Our Savior Parish	Santa Ana	Christ Our Savior Parish
ITZ Happenin! Radio Show Interview		ITZ Happenin!
Los Amigos Community Forum	Anaheim	
Laguna Woods Republican Club ROV Tour	Santa Ana	ROV
National Disability Voter Registration Week	Anaheim	
Korean American Chamber of Commerce's Breakfast with Police Chiefs	Garden Grove	Korean American Chamber of Commerce-Orange County
Asian Americans In Action Community Mixer	Santa Ana	Asian Americans In Action
Orange County Labor Federation Candidate Academy	Buena Park	OCLF
OC Fair	Costa Mesa	
City of La Palma Civic Expo & National Night Out	La Palma	City of La Palma
OC Fair	Costa Mesa	
Anaheim Democrats Club	Anaheim	Anaheim Democrats Club
OC Fair	Costa Mesa	

City Officials and Government Agencies

OCROV leveraged existing working relationships with government agencies and elected officials to raise public awareness of the transition to Vote Centers and ongoing public education efforts. Numerous events and speaking engagements with government agencies are scheduled on an ongoing basis. City officials and government staff have been OCROV's first partners in Vote Center outreach and education.

Multimedia materials made available to government agencies for distribution and constituent outreach include:

- Graphics (various formats depending on request)
- Press releases
- Newsletters
- Webpage links
- Videos
- Radio ads
- Brochures
- FAQs
- Flyers
- Ads and Posters
- Social Media Kit
- Style Guide

Community Partners

If you or your organization would like to partner with OCROV on Vote Center outreach and education, please visit the website ocvote.com/community or email ocvoter@rov.ocgov.com.

Language Community Partners

- Achieve Better Communication
- Alliance for Justice
- Alliance Rehabilitation
- Anaheim Spanish Adventist Church
- Asian American Senior Citizens Service Center
- Asian Americans Advancing Justice - Los Angeles
- Asian Americans Advancing Justice - Orange County
- Association of the Vietnamese Language & Culture Schools of Southern California
- Boat People SOS
- Council on American-Islamic Relations - California
- Cambodian Family
- Catholic Charities of Orange County
- Center for Asians United for Self Empowerment
- Centro Cultural de Mexico
- Chinese American Association of Orange County
- Chinese American Mutual Association
- CIELO
- Comunidad Forum
- CSUF Asian Pacific American Resource Center
- De Colores OC
- El Modena
- Family Enrichment
- Filipino American Chamber of Commerce
- Fundacion de Sobrevivientes de Trafico
- Hispanic Bar Association of Orange County
- Hispanic Women Network
- Hispanic Chamber of Commerce of Orange County
- Institute of Vietnamese Studies
- inter-Community Action Network
- Iranian Circle of Women's Intercultural Network

Language Community Partners (continued)


- Irvine Evergreen Chinese Senior Association
- Korean American Center
- Korean Community Services
- Korean Resource Center
- Latino Health Access
- Los Amigos of Orange County
- LULAC Anaheim
- LULAC Santa Ana
- LULAC Fullerton College
- LULAC Santa Ana
- Mexican American Legal Defense and Education Fund
- National Association of Latino Elected Officials
- Network of Iranian-American Professionals of Orange County
- National Hispanic Business Association
- North Orange County Chinese Culture Association
- Orange County Asian Pacific Islander Community Alliance
- Orange County Chinese American Chamber of Commerce
- Orange County Herald Center
- Orange County Hispanic Chamber of Commerce
- Orange County Youth Immigrant United
- Overseas Community Care Network of Orange County
- Parent Union Santa Ana
- South Asian Network
- South Coast Chinese Cultural Association/Irvine Chinese School
- Southern California Council of Chinese Schools
- Taller San Jose
- Union of Vietnamese Student Association
- Vietnamese American Chamber of Commerce
- VietRISE
- Voting Involvement Association Nonprofit
- Welrvine

Sample Language Assistance Card

VOTER ASSISTANCE SERVICES

The Orange County Registrar of Voters provides language support in Spanish, Vietnamese, Korean, Chinese, Tagalog, Persian (Farsi), Japanese, Hindi, and Gujarati

LANGUAGE SERVICES	SPANISH / ESPAÑOL	VIETNAMESE / TIẾNG VIỆT	KOREAN / 한국어	CHINESE / 中文	TAGALOG	PERSIAN (FARSI) / فارسی	JAPANESE / 日本人	HINDI / हिन्दी	GUJARATI / ગુજરાતી
Speak	Hablar	Nhân Viên Song Ngữ	현장 요원	翻譯人員	Magsalita	مکالمه	話す	बोले	બોલો
Phone	☑️ Telefono	☑️ Điện Thoại	☑️ 전화	☑️ 電話	☑️ Telepono	☑️ توسط تلفن	☑️ 電話	☑️ फोन	☑️ ટેલિફોન
Video Conferencing	☑️ Videoconferencia	☑️ Hội Thảo qua Video	☑️ 화상전화	☑️ 視訊會議	Komperensya sa Pamamagitan ng Video	☑️ کنفرانس از طریق ویدئو	☑️ ビデオ会議	☑️ वीडियो कॉन्फरेंसिंग	☑️ વીડિયો કોન્ફરન્સિંગ
Ballots	☑️ Boleta de Papel	☑️ Phiếu Bầu	☑️ 투표지	☑️ 選票	Balota	☑️ برگه های رأی گویا	☑️ 投票用紙	☑️ मतपत्र	☑️ બે વોટ
Reference Ballots	Boleta de Referencia	Phiếu Bầu Tham Khảo được Biên Dịch	번역된 참조 투표지	翻譯參考選票	☑️ Isinaling Sangguni-ang Balota	☑️ نمونه برگه های رأی	☑️ 参照投票	☑️ संदर्भ मतपत्र	☑️ સંદર્ભ બે વોટ



ACCESSIBILITY ASSISTANCE SERVICES

- Accessible voting machines to mark your ballot
- American Sign Language interpreter via video conferencing
- Curbside voting with paper ballot
- Additional assistance upon request

For more information, please check in with Vote Center staff.

Disability Community Partners

- Age Well Senior Services
- Braille Institute
- California Council for the Blind
- California Department of Rehabilitation
- Coastline College Special Programs
- Council on Aging
- Dayle McIntosh Center
- Department of Rehabilitation
- Disability Rights California
- Disability Student Services - Cal State University Fullerton
- Disability Student Services - Fullerton College
- Disability Student Services - Santiago Canyon College
- Down Syndrome Association of Orange County
- Easterseals
- North Orange County Senior Collaborative
- OC Deaf Equal Access Foundation
- OC In-Home Supportive Services Public Authority
- Orange County Transportation Authority
- Project Independence
- Regional Center of Orange County
- Sensory Impaired Guidance Network
- State Council on Developmental Disabilities
- United Cerebral Palsy of Orange County
- University of California Irvine Disability Services Center
- Vocational Visions

Political, Advocacy, and Professional Organizations

- American Civil Liberties Union
- Democratic Party of Orange County
- Future of California Elections
- Green Party of Orange County
- League of Women Voters of Orange County
- National American Association of Colored People
- Orange County Communities Organized for Responsible Development
- Orange County Congregation Community Organization
- Orange County Employee Association
- Orange County Labor Federation
- Orange County Professional Firefighters Association
- Republican Party of Orange County
- Republican Women Federated of Orange County
- Retired Employees of Orange County
- Resilience OC

Media Partners

If you or your organization would like to partner with OCROV on Vote Center outreach and education, please visit the website ocvote.com/votecenter or email ocvoter@rov.ocgov.com.

Publication Name	Type
Aliso Viejo News	Newspaper
Anaheim Bulletin	Newspaper
Associated Press (AP) Orange County California	Newspaper
Capistrano Dispatch	Newspaper
Capistrano Valley News	Newspaper
Chapman University Panther	College/University Newspaper
Coast Magazine	Magazine
Costa Mesa Daily Pilot	Newspaper
CSUF Daily Titan	College/University Newspaper
Cypress College Chronicle	College/University Newspaper
Dana Point Times	Newspaper
Fullerton College Hornet	College/University Newspaper
Huntington Beach News	Newspaper
Irvine World News	Newspaper
KABC TV 7 (ABC)	Television
KCAL TV 9	Television
KCBS TV 2 (CBS)	Television
KCOP TV 13 (MyTV)	Television
KDOC TV 56	Television
KFI AM 640	Radio
KLCS TV 58 (PBS)	Television
KNBC TV 4 (NBC)	Television
KNX AM 1070	Radio
KOCE TV 50 (PBS)	Television
KTLA TV 5 (CW)	Television
KTTV TV 11 (Fox)	Television
KUCI FM 89.3	Radio
Laguna Beach Independent	Newspaper
Laguna News-Post	Newspaper
Laguna Woods Globe	Newspaper
Los Angeles Times	Newspaper

New University	College/University Newspaper
OC Weekly	Magazine
OCC Coast Report	College/University Newspaper
Orange City News	Newspaper
Orange Coast Magazine	Magazine
Orange County Business Journal	Newspaper
Orange County Register	Newspaper
Orange County Reporter	Newspaper
Saddleback Valley News	Newspaper
San Clemente Times	Newspaper
Seal Beach Sun	Newspaper
Tustin News	Newspaper
UCI New University	College/University Newspaper
Voice of OC	Newspaper
Western Outdoors News	Newspaper
Westminster Journal	Newspaper
Westways Magazine	Newspaper
Yorba Linda Star	Newspaper

Language Media Partners

Language	Publication Name
Farsi (Persian)	Orange County Persian Community TV
Farsi (Persian)	Dakeeh Magazine
Farsi (Persian)	Seeb Magazine
Farsi (Persian)	PAYAM ASHENA
Farsi (Persian)	KIRN - Radio Iran 670 AM
Farsi (Persian)	Iranian Hotline
Tagalog	Radio Filipino USA
Tagalog	California Journal for Filipino Americans
Tagalog	Asian Journal - Southern California
Vietnamese	VNA TV
Vietnamese	KVLA 57.3 TV
Vietnamese	Little Saigon Radio
Vietnamese	Nguoi Viet Daily News
Vietnamese	Vien Dong
Vietnamese	Viet Bao
Vietnamese	Pho Bolsa TV
Vietnamese	Little Saigon TV
Chinese	World Journal
Chinese	Sing Tao Daily
Chinese	Taiwan Daily
Chinese	Chinese L.A. Daily News
Chinese	CCYP
Chinese	US News Express
Chinese	ChineseNewsUSA.Com
Chinese	Five Continents & Four Oceans News
Chinese	Pacific Times
Chinese	The China Press
Chinese	The Epoch Times
Chinese	La JaJa Kids
Chinese	Eastern Television (ETTV) America
Chinese	New Tang Dynasty Television (NTDTV)
Chinese	The Sound of Hope
Chinese	Sky Link TV
Chinese	SINO TV

Chinese	Phoenix Satellite TV
Korean	The Korea Daily
Korean	Korea Times
Korean	Korea Town Daily
Korean	The Weekly Herald
Korean	Town News
Korean	SBS International
Korean	MBC America
Korean	KBS America
Korean	Radio Korea-AM 1540
Korean	Radio Seoul-AM 1650
Korean	Woori Radio - AM 1230
Korean	Korean Gospel Broadcasting-AM1190
Korean	TVK24
Korean	Dongpo News
Korean	YTN
Korean	Christian Vision
Korean	Kukmin Daily
Korean	Dongpo Journal
Korean	Sunday Journal
Korean	CGN TV
Korean	Christian Herald
Korean	Uri Radio
Korean	Media Group
Spanish	Santa Ana Noticias
Spanish	Azteca
Spanish	Rumores Newspaper
Spanish	Para Todos
Spanish	El Aviso
Spanish	Excelsior
Spanish	HOY
Spanish	La Opinion
Spanish	KMEX-TV (Univision)
Spanish	KVEA-TV (Telemundo)
Spanish	KVEA-TV (Telemundo)
Spanish	KWHY-TV

Public Input Overview

Community Elections Working Group

The Community Election Working Group (CEW) is a diverse 25-member community advisory board committed to making sure elections are open and accessible.

CEW Members	
Name	Organization
CEW Chair, Lucinda Williams	City Clerk, City of Fullerton
CEW Vice-Chair, Debra Marsteller	Executive Director, Project Independence
CITY CLERKS	
Adria M. Jimenez	City Clerk, City of Buena Park
Theresa Bass	City Clerk, City of Anaheim
Daisy Gomez	City Clerk, City of Santa Ana
Lucinda Williams (CEW Chair)	City Clerk, City of Fullerton
ASIAN COMMUNITY	
Tammy Kim	Managing Director, Korean American Center / Korean Community Services
Mike Chen	Chairman, South Coast Chinese Cultural Association to Asian Community
Tim Cheng (CEW LAAC Co-Chair)	Co-President, Asian American Senior Citizens Service Center
Charles Kim	President, inter-Community Action Network (iCAN)
LATINO COMMUNITY	
Alba Ramiro	Parish Ministry Coordinator, Catholic Charities of Orange County
Ruben Alvarez, Jr.	Publisher, Stay Connected OC
Eddie Marquez, J.D.	Executive Board Member, OC Hispanic Chamber
Marisol Ramirez	Community Engagement Lead, Regal Medical Group
DISABLED COMMUNITY	
Evelyn Farooquee	Program Director, Easterseals of Southern California
Debra Marsteller (CEW Vice-Chair)	Executive Director, Project Independence

CEW Members	
Name	Organization
Paul Spencer	Attorney, Disability Rights California
Gabriel Taylor (CEW VAAC Co-Chair)	Voting Rights Advocate
SENIOR COMMUNITY	
Judith Barnes	Member of the Public
VOTE CENTER CUSTOMER SERVICE REPRESENTATIVES	
Moneka Walker-Burger	Member of the Public
Mary Jo Rowe	Member of the Public
DEMOCRATIC PARTY	
Ajay Mohan	Executive Director, Democratic Party of Orange County
REPUBLICAN PARTY	
Randall Avila	Executive Director, Republican Party of Orange County
ALTERNATIVE PARTIES	
David Landry	Chairperson, Peace and Freedom Central Committee
LEAGUE OF WOMEN VOTERS	
Jan Urban	Representative, League of Women Voters of OC
YOUTH REPRESENTATIVE	
Alexander Williams	Member of the Public
VETERANS AFFAIRS	
Lyle Brakob	Member of the Public
AT LARGE	
Garrett M. Fahy	Election Law Attorney
Brianna M. Calleros	Community Leader

Meeting Agenda



REGISTRAR OF VOTERS
 1300 South Grand Avenue, Bldg. C
 Santa Ana, California 92705
 (714) 567-7600
 TDD (714) 567-7608
 FAX (714) 567-7627
 www.ocvote.com

Thursday, July 29, 2021 – 9:30 AM – 11:15 AM

Time	Discussion	Presenter / Topic
9:30 – 9:40 AM	Welcome and approval of February 24, 2021 CEW meeting minutes; election of new chair and vice chair; welcome new members; other housekeeping	Ruben Alvarez Jr., Chair; Neal Kelley, Registrar of Voters
9:40 - 10:10 AM	Overview of Statewide Recall election planning; SB 152 requirements; ballot and voting materials; challenges	Neal Kelley, Registrar of Voters; Justin Berardino, Operations Manager; Imelda Carrillo, Manager, Election Services
10:10 – 10:30 AM	Voter outreach and education recall plans; language assistance; voters with disabilities assistance; Voting Rights Act (VRA) 2021 compliance update	Neal Kelley, Registrar of Voters; Enedina Chhim, Manager, Community Outreach; Imelda Carrillo, Manager, Election Services
10:30 – 10:50 AM	Overview of update to Election Administration Plan (EAP) and Voter Education and Outreach Plan (VEOP).	Neal Kelley, Registrar of Voters; various members of Management team
10:50 - 11:15 AM	Update from CEW Voting Accessibility Committee (VAAC) and CEW Voting Language Committee (LAAC); other business	Imelda Carrillo, Manager, Election Services; Enedina Chhim, Manager, Community Outreach

Voting Accessibility Committee & Language Accessibility Committee

Implemented in early 2017, the CEW Subcommittee Voting Accessibility Advisory Committee (VAAC) and the CEW Subcommittee Language Accessibility Advisory Committee (LAAC) are two independent committees of the Community Election Working group that meet to consider the needs of voters with disabilities and language minority communities pertaining to Vote Centers and overall voting options.

The VAAC and LAAC were established to receive advise from voters with disabilities, voters with language needs and organizations that serve them. Agendas focus on voter education and outreach, creating collaborative opportunities, and providing a forum for community-informed feedback and input on operational best practices.

If you or your organization would like more information about these community advisory groups or are interested in becoming a member, please visit ocvote.com/cew or email ocvoter@rov.ocgov.com.

Voting Accessibility Advisory Committee

The CEW - Voting Accessibility Committee, an independent committee of the Community Election Working group, meets to consider the needs of voters with disabilities pertaining to Vote Centers and all mail-ballot elections. This committee meets the statutory requirements of the Voting Accessibility Advisory Committee.

Name	Organization
Julia Gomez	ACLU of Southern California
Philip Reeves	Braille Institute
Rudy Villalobos	CA Dept of Rehabilitation
Jamie Cansler	Council on Aging
Marilyn Fedorow	Council on Aging
Helia Daigeau	Disability Rights California
Larry Wanger	Dayle McIntosh Center
Bhumit Shah	Disability Rights California
Gabriel Taylor	Disability Rights California
Paul Spencer	Disability Rights California
Eddie Roth	Disability Student Services - Fullerton College
Starr Avedesian	Disability Student Services - Santiago Canyon College
Kelly Phillips	Easterseals
Nancy Weintraub	Easterseals
Ramona Ramirez	Easterseals
Evelyn Farooquee	Easterseals
Larry Singer	Member of the Public
Isaac Lopez	Member of the Public
General Contact	OC Deaf Equal Access Foundations
Joey Contreras	OC Deaf Equal Access Foundations
Debra Marsteller	Project Independence
Jyusse Corey	Regional Center of Orange County
Reina Hernandez	Regional Center of Orange County
Karen Millender	State Council on Developmental Disabilities
Kyle Minnis	State Council on Developmental Disabilities
Scarlett K. vonThenen	State Council on Developmental Disabilities
Stacy Branham	UC Irvine
Tami Di Paolo	United Cerebral Palsy of Orange County



Voting Accessibility Advisory Committee Meeting
Wednesday, May 19, 2021 – 10 AM

Discussion	Presenter / Topic
Welcome, Introductions	Imelda Carrillo, Election Services Manager
March 2021 Special Election Recap	Dave Charobee, Community Program Specialist
2021 - 2022 Election Planning	Enedina Chhim, Community Program Specialist
Election Administration Plan & Public Meetings	Roxana Castro, Community Program Specialist
Outreach & Community Engagement	Leah Fallon, Community Program Specialist
Closing Remarks	Imelda Carrillo, Election Services Manager

Language Accessibility Advisory Committee

The CEW Language Accessibility Advisory Committee, an independent committee of the Community Election Working group, meets to consider the needs of language minority communities pertaining to Vote Centers and all mail-ballot elections. This committee meets the statutory requirements of the Languages Accessibility Advisory Committee.

Name	Organization
Charles Kim	inter-Community Action Network
Faye Hezar	Member of the Public
Hang Nguyen	BPSOS Center for Community Advancement
Joe Long	OC Census Vietnamese CCC
June Shang	Member of the Public
Katie Tran	Hope Community Services
Miguel Hernandez	Orange County Congregation Community Organization
Mike Chen	South Coast Chinese Cultural Association
Myung Suh	Korean American Federation of Orange County
Quintilia Avila	NALEO
Ruben Alvarez	StayConnected OC
Samuel Tseng	JCUAA(Joint Chinese University Alumni Association of Southern California)
Shannon Zhao	VIAN (Voting Involvement Association Nonprofit)
Sudabeh (Sudi) Farokhnia	Iranian American Democrats of California (IADC)
Tammy Kim	Korean American Center
Tim Cheng	Asian American Senior Citizens Service Center
Tracy La	VietRise
Vy Le	UCI Chao Family Comprehensive Cancer Center

Meeting agenda



REGISTRAR OF VOTERS
1300 South Grand Avenue, Bldg. C
Santa Ana, California 92705
(714) 567-7800
FAX (714) 567-7844
ocvote.com

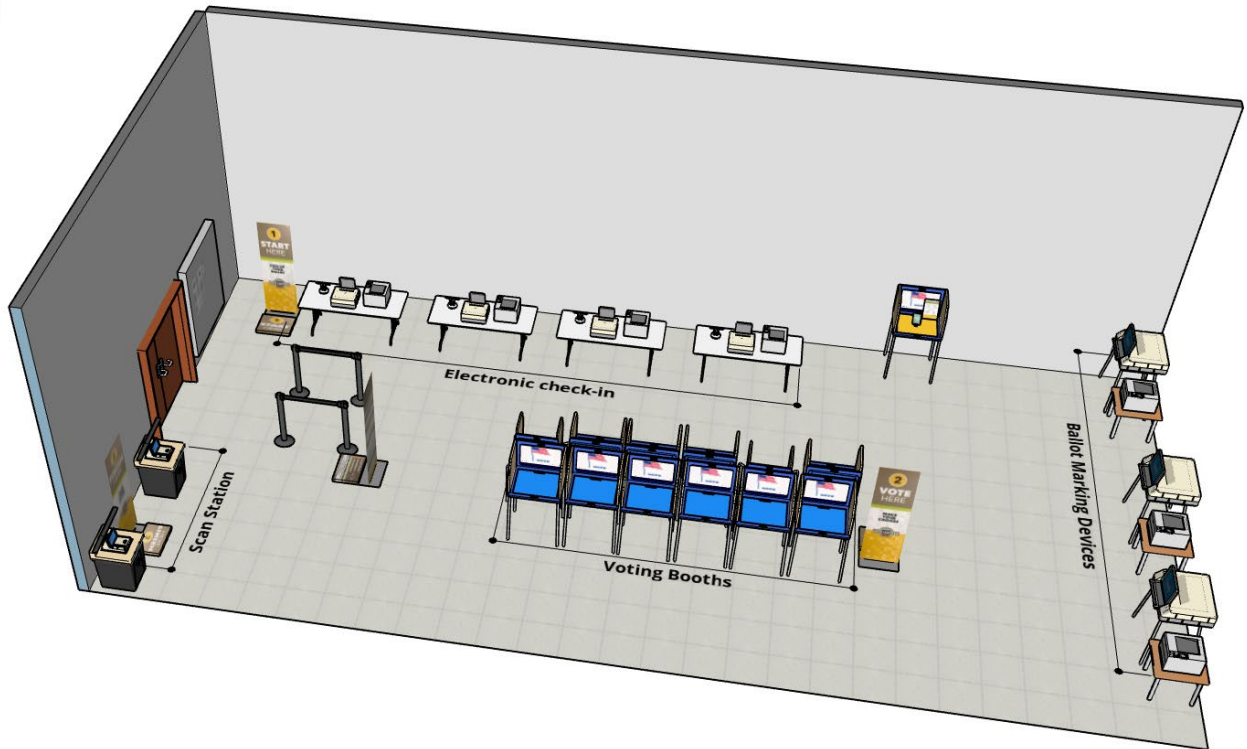
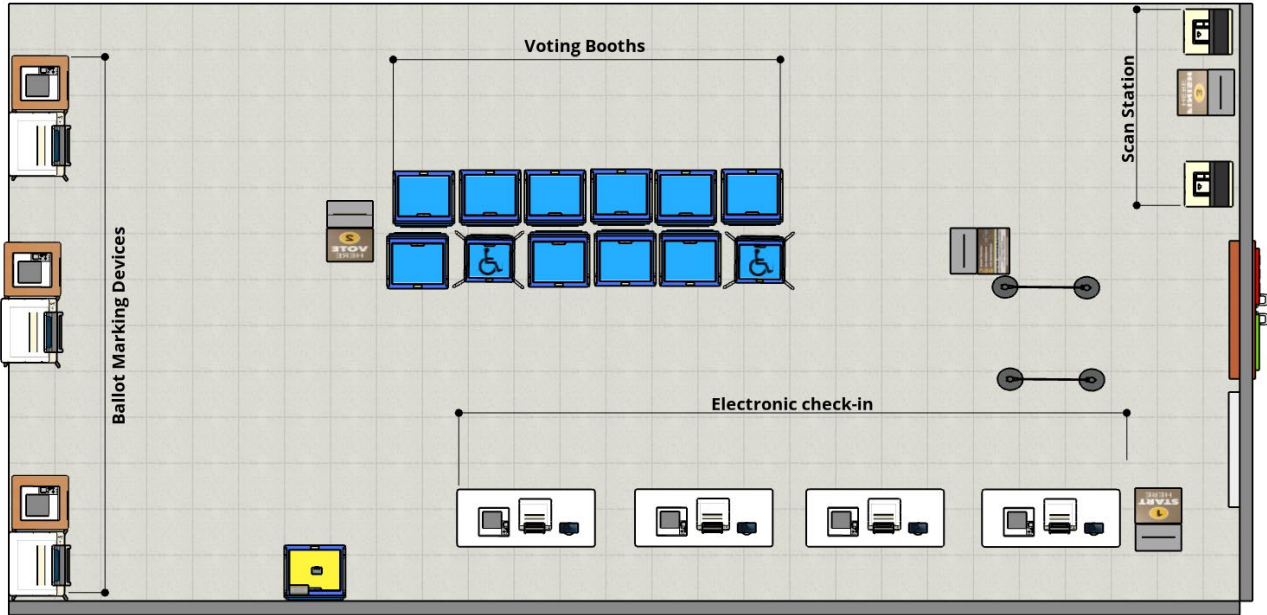
NEAL KELLEY
Registrar of Voters

Mailing Address:
P.O. Box 11298
Santa Ana, California 92711

**Language Accessibility Advisory Committee
Meeting Agenda
May 19, 2021
Time: 1:30pm**

Discussion	Presenter / Topic
Welcome & Introductions	Tim Cheng, CEW LAAC Co-Chair & Asian American Senior Citizens Service Center
2020 Census Data	Karduz Nguyen, Community Program Specialist
2021-2022 Election Planning	Erica Yun, Community Program Specialist
2021 Election Administration Plan Update and Public Meetings	Tina Lee, Community Program Specialist
Community Outreach Strategies	Kristy Chen, Community Program Specialist
Closing Remarks	Jackie Wu, Community Outreach Manager

Vote Center Layout



List of Vote Centers and Ballot Drop Box Locations

The Vote Center and ballot drop box selection process is currently ongoing. The most current list of Vote Centers and Ballot Drop Boxes can be found on the website and in the VIG. A voter can locate their nearest Vote Center and Ballot Drop Box location using the lookup tool located on the website.

11 Day Vote Centers

For the March 2020 Presidential Primary Election, the VCA model was followed for Vote Centers with both 11 day and 4 day locations. Due to the pandemic, legislation was passed to modify the requirement to a minimum of 4 days for the November 2020 Presidential General Election.

Vote Center locations identified as 11 Day, opened Saturday, February 22, 2020 to Friday, February 28, 2020, from 8 am to 5 pm; Saturday, February 29, 2020 to Monday, March 2, 2020 from 8 am to 8 pm and on Election Day, March 3, 2020 from 7 am to 8 pm.

4 Day Vote Centers

Vote Center locations identified as 4 Day, opened Saturday, February 29, 2020 to Monday, March 2, 2020 from 8 am to 8 pm and on Election Day, March 3, 2020 from 7 am to 8 pm.

Ballot Drop Box Locations

All ballot drop box locations are outdoors and available 24 hours per day, 7 days per week beginning 29 days before Election Day and closed at 8:00 p.m. on election night.

If you would like to suggest a potential site, please complete the Site Selection Suggestion Form at ocvote.com/sitesuggestion. This form will be available to the public until Vote Center and ballot drop box locations are finalized.

The list below serves as a sample and reflects the Vote Center and Ballot Drop Box locations used in the March 2020 Presidential Primary Election.



Vote Center Locations

Section
8

Dates and hours vary - see below for more info.

ALISO VIEJO

Aliso Viejo Branch Library*	1 Journey	Corner of Pacific Park Dr
Soka University of America, Founders Hall**	1 University Dr	Off Wood Canyon Dr (Park in Lot A)
Iglesia Park Community Center**	24671 Via Iglesia	Off Moulton Pkwy
Renaissance Club Sport**	50 Enterprise	Corner of Parker Pl & Aliso Viejo Pkwy

ANAHEIM

Zion Lutheran Church*	222 N East St	Btwn Lincoln Ave & Sycamore St
West Anaheim Youth Center*	320 S Beach Blvd	Btwn Lincoln Ave & Orange Ave
East Anaheim Community Center*	8201 E Santa Ana Canyon Rd	W of Weir Canyon Rd
Brookhurst Community Center**	2271 Crescent Ave	Btwn Brookhurst St & Gilbert St
Ponderosa Family Resource Center**	320 E Orangewood Ave	Btwn Haster St & Lewis St
Anaheim Elementary School District**	1001 S East St	Btwn Vermont Ave & Ball Rd
Savanna School District**	1330 S Knott Ave	Btwn Ball Rd & Cerritos Ave
Anaheim Independencia Family Resource Center**	10841 Garza Ave	Off Gilbert St & Katella Ave
St Anthony Mary Claret Catholic Church**	1450 E La Palma Ave	Btwn State College Blvd & East St
Islamic Institute of Orange County**	1220 N State College Blvd	Btwn 91 Fwy & La Palma Ave
West Coast Islamic Society**	1717 S Brookhurst St	Btwn Katella Ave & Cerritos Ave
Bombay Club**	1125 N Magnolia Ave	Btwn La Palma Ave & 5 Fwy
Haskett Branch Library**	2650 W Broadway	Btwn Magnolia Ave & Dale Ave
Canyon Hills Branch Library**	400 S Scout Trail	Off Nohl Ranch Rd
Camphor Tree Plaza**	2060 S Euclid St, Ste EF	Corner of Orangewood Ave

BREA

Brea Museum & Historical Society (Not accessible)*	495 S Brea Blvd	Corner of Elm St
Brea Fire Station # 2**	200 N Brea Blvd	Btwn Birch St & Lambert Rd
Embassy Suites by Hilton Brea**	900 E Birch St	Btwn Imperial Hwy & 57 Fwy

BUENA PARK

Walter Knott Education Center*	7300 La Palma Ave	Btwn Knott Ave & Western Ave
Buena Park Community Center**	6688 Beach Blvd	Behind City Hall, On Pinchot Ct
Hampton Inn & Suites Buena Park**	7307 Artesia Blvd	Btwn Beach Blvd & 5 Fwy
La Quinta Inn & Suites Buena Park**	3 Centerpointe Dr	Off Orangethorpe Ave

COSTA MESA

Costa Mesa City Hall*	77 Fair Dr	Btwn Newport Blvd & Vanguard Way
Balearic Community Center**	1975 Balearic Dr	Off Shantar Dr, N of Adams Ave
Costa Mesa Senior Center**	695 W 19th St	Corner of Pomona Ave
Costa Mesa Library-Donald Dungan Library**	1855 Park Ave	Btwn W 18th St & W 19th St
Sofia University**	3333 Harbor Blvd	Btwn S Coast Dr & Sunflower Ave
Coast Community College District**	1370 Adams Ave	Btwn Harbor Blvd & Fairview Rd
John Wayne Airport Administration Office**	3160 Airway Ave	Off Red Hill Ave & Paularino Ave

CYPRESS

Cypress Branch Library*	5331 Orange Ave	Btwn Walker St & Grindlay St
Cypress College, Bldg 18, School of Cont. Ed.**	9200 Valley View St	Btwn Orange Ave & Lincoln Ave (Park in Lot 4)
Cypress Senior Center**	9031 Grindlay St	Off Lincoln Ave
Hyatt House**	5905 Corporate Ave	Off Valley View St

DATES AND TIMES:

*February 22 - 28, 8am-5pm | February 29 - March 2, 8am-8pm | March 3, 7am-8pm

**February 29 - March 2, 8am-8pm | March 3, 7am-8pm

For additional Vote Center locations, visit ocvote.com/votecenter



Vote Center Locations

Section
8

Dates and hours vary - see below for more info.

DANA POINT

Dana Point Community Center*	34052 Del Obispo St	Btwn PCH & Stonehill Dr
Dana Point Branch Library**	33841 Niguel Rd	Btwn PCH & Stonehill Dr

FOUNTAIN VALLEY

Fountain Valley Recreation Center*	16400 Brookhurst St	Btwn Heil Ave & Edinger Ave
Freedom Hall at Mile Square Park**	16801 Euclid St	Enter from Edinger Ave & Ward St (Park in Lot E)
Orange County Water District**	18700 Ward St	Off Ellis Ave

FULLERTON

Fullerton Public Library*	353 W Commonwealth Ave	Btwn Amerige Ave & Commonwealth Ave
St Andrew's Episcopal Church**	1231 E Chapman Ave	Btwn Victoria Dr & N Raymond Ave
Gilbert Community Center**	2120 W Orangethorpe Ave	Btwn Gilbert St & Brookhurst Rd
Hillcrest Community Center**	1155 N Lemon St	Corner of E Valley View Dr
Fullerton Joint Union High School District Office**	1051 W Bastanchury Rd	Btwn Euclid & Parks Rd
Independence Park**	801 W Valencia Dr	Btwn Euclid St & S Richman Ave
CSUF Housing & Residential Engagement Office**	1509 E Campus Dr	Off Gymnasium Campus Dr
Public Works Maintenance Yard**	1580 W Commonwealth Ave	Corner of Basque Ave

GARDEN GROVE

West Haven Park*	12252 West St	Btwn Lampson & Chapman Ave
Garden Grove Sports and Rec Center*	13641 Deodara Dr	Btwn Brookhurst St & Magnolia St
Edgar Park Meeting Room**	6202 Cerulean Ave	Off Lampson Ave & Topaz Ave
H Louis Lake Senior Center**	11300 Stanford	Btwn Euclid St & 9th St
Chapman-Hettings Center**	11852 Knott Ave	Btwn Chapman Ave & Orangewood Ave
Orangefield Child Development Center**	9822 Russell Ave	Btwn Garden Grove Blvd & Trask Ave (Enter off Kerry St)
Code Ninjas**	9575 Chapman Ave	Btwn Gilbert St & Brookhurst St
CTS Cement Manufacturing Corporation**	12442 Knott St	Btwn Lampson Ave & Chapman Ave
Brookhurst Place**	12801 Brookhurst St	Btwn Garden Grove Blvd & Standard Ave
Assistance League of Garden Grove**	10932 Trask Ave	Btwn Euclid St & Taft Ave
Harbor Place Plaza**	13204 Harbor Blvd	Btwn Garden Grove Blvd & Trask Ave

HUNTINGTON BEACH

Michael E Rodgers Senior Center*	1706 Orange Ave	Btwn 17th St & 18th St
Huntington Beach Central Library*	7111 Talbert Ave	Btwn Goldenwest St & Gothard St
Edison Community Center**	21377 Magnolia St	Btwn Hamilton Ave & Atlanta Ave
Huntington Beach Civic Center**	2000 Main St	Btwn Yorktown & Utica Ave
Main Street Branch Library**	525 Main St	Corner of 6th St
Ocean View District Office, Bldg E - Prof Learning Ctr**	17200 Pinehurst Ln	E of Springdale St, Btwn Slater Ave & Warner Ave
Golden West College**	15744 Goldenwest St	At Gothard St & Center Ave (Park in Lot H)
Resurrection Lutheran Church**	9812 Hamilton Ave	Btwn Bushard St & Brookhurst St
Huntington Beach City School District**	8750 Dorsett Dr	Btwn Atlanta Ave & Hamilton Ave (Enter off Miramar Ln)
Brookfield Manor Clubhouse**	9850 Garfield Ave	Btwn Bushard St & Brookhurst St
Storefront at Plaza de la Raya**	19092 Beach Blvd, Ste N	Near corner of Garfield Ave & Yorktown Ave

IRVINE

Irvine City Hall*	1 Civic Center Plaza	Corner of Harvard Ave & Alton Pkwy
Portola Springs Community Center*	900 Tomato Springs	Off Pearlblossom & Portola Pkwy
Quail Hill Community Center*	39 Shady Canyon Dr	Off Quail Hill Pkwy

DATES AND TIMES:

*February 22 - 28, 8am-5pm | February 29 - March 2, 8am-8pm | March 3, 7am-8pm

**February 29 - March 2, 8am-8pm | March 3, 7am-8pm

For additional Vote Center locations, visit ocvote.com/votecenter



Vote Center Locations

Section
8

Dates and hours vary - see below for more info.

IRVINE (Continued)

Deerfield Community Center**	55 Deerwood W	Off Irvine Ctr Dr
Lakeview Senior Center**	20 Lake Rd	Btwn Alton Pkwy & Barranca Pkwy
Las Lomas Community Center**	10 Federation Way	Off Turtle Ridge Dr
Los Olivos Community Center**	101 Alfonso Dr	Off Bake Pkwy
Northwood Community Center**	4531 Bryan Ave	Btwn Yale & Culver Dr
University Community Center**	1 Beech Tree Ln	Btwn University Dr & Michelson Dr
OC Great Park**	8000 Great Park Blvd	At Great Park Blvd (Adjacent to Great Park Carousel)
UCI - Mesa Court Community Center**	4053 Mesa Rd	Btwn University Dr & Campus Dr (Park in Lot 14)
Heritage Park Regional Library**	14361 Yale	Corner of Walnut Ave
Irvine Valley College**	5500 Irvine Center Dr	Btwn Jeffrey Rd & Sand Canyon Ave (Park in Lot 10)
South Coast Chinese Cultural Center**	9 Truman St	Btwn 5 Fwy & Trabuco Rd
University Hills Community Center**	1083 California Ave	Corner of Gabrielino Dr
Cal State Fullerton Irvine Center**	3 Banting	Btwn Barranca Pkwy & Alton Pkwy

LA HABRA

La Habra Community Center*	101 W La Habra Blvd	Corner of Euclid St
La Habra City School District Office**	500 N Walnut St	Btwn La Habra Blvd & Whittier Blvd
Plaza del Sol**	121 S Beach Blvd, Ste C	Corner of La Habra Blvd

LA PALMA

La Palma Community Center*	7821 Walker St	Btwn La Palma Ave & Orangethorpe Ave
----------------------------	----------------	--------------------------------------

LAGUNA BEACH

Laguna Beach Community Center & Susi Q Center**	380 3rd St	Btwn Forest Ave & Park Ave (Park in Lot 13)
---	------------	---

LAGUNA HILLS

Laguna Hills City Hall*	24035 El Toro Rd	Btwn Paseo De Valencia & Avenida De La Carlota
The Village at Nellie Gail Ranch Plaza**	26548 Moulton Pkwy, Ste 48L	Corner of La Paz Rd
The Hills Hotel**	25205 La Paz Rd	Off Cabot Rd

LAGUNA NIGUEL

Laguna Niguel City Hall*	30111 Crown Valley Pkwy	Corner of Alicia Pkwy
Sea Country Senior and Community Center**	24602 Aliso Creek Rd	Corner of Moulton Pkwy
Kite Hill Clubhouse**	29101 Kite Hill Dr	Btwn Alicia Pkwy & La Paz Rd (Enter Recreation Ctr Dr)
Marina Hills Recreation Center**	31461 Parc Vista W	Off Marina Hills Dr

LAGUNA WOODS

Laguna Woods City Hall*	24264 El Toro Rd	Btwn Moulton Pkwy & Paseo De Valencia
Laguna Woods Village - Clubhouse 7**	24111 Moulton Pkwy	N of El Toro Rd (Enter at Gate 16)

LAKE FOREST

Lake Forest Civic Center*	100 Civic Center Dr	Btwn Bake Pkwy & Lake Forest Dr
Lake Forest Sports Park**	28000 Rancho Pkwy	Off Lake Forest Dr (Enter on Vista Terrace)
El Toro Branch Library**	24672 Raymond Way	Off El Toro Rd
Foothill Ranch Library**	27002 Cabriole	Corner of Rue De Fortuna & Bake Pkwy
El Toro Water District Office**	24251 Los Alisos Blvd	Btwn 5 Fwy & Rockfield Blvd

LOS ALAMITOS

Los Alamitos School District**	10293 Bloomfield St	Btwn Ball Rd & Cerritos Ave
--------------------------------	---------------------	-----------------------------

MIDWAY CITY

Midway City Community Center**	14900 Park Ln	Off Newland St & Bolsa Ave
--------------------------------	---------------	----------------------------

DATES AND TIMES:

*February 22 - 28, 8am-5pm | February 29 - March 2, 8am-8pm | March 3, 7am-8pm

**February 29 - March 2, 8am-8pm | March 3, 7am-8pm

For additional Vote Center locations, visit ocvote.com/votecenter



Vote Center Locations

Section 8

Dates and hours vary - see below for more info.

MISSION VIEJO

Mission Viejo City Hall*	200 Civic Center	Corner of Marguerite Pkwy & La Paz Rd
Saddleback Valley Unified School District**	25631 Peter A Hartman Way	Off Alisos Blvd & Jeronimo Rd
Mission Viejo Church of Christ**	26558 Marguerite Pkwy	Corner of Felipe Rd
Saddleback College**	28000 Marguerite Pkwy	Enter @ College Dr E & Lower Campus Dr (Park in Lot 2)
Casta Del Sol Golf Course**	27601 Casta del Sol	Btwn Alicia Pkwy & Marguerite Pkwy
Orange County Islamic Foundation (OCIF)**	23581 Madero	N of Alicia Pkwy, E of Jeronimo Rd
Storefront at 28815 Los Alisos Blvd**	28815 Los Alisos Blvd, Ste A	Btwn 241 & Santa Margarita Pkwy

NEWPORT BEACH

Newport Beach Civic Center*	100 Civic Center Dr	Btwn MacArthur Blvd & Avocado Ave
Marina Park Community Center**	1600 W Balboa Blvd	Btwn 15th St & 18th St
Newport Coast Community Center**	6401 San Joaquin Hills Rd	Corner of Newport Coast Dr
OASIS Senior Center**	801 Narcissus Ave	Corner of Marguerite Ave & 5th Ave
Newport Harbor Lutheran Church**	798 Dover St	Btwn E 16th St & Cliff Dr
Newport Harbor Lawn Bowling Club**	1550 Crown Dr	Btwn MacArthur Blvd & San Joaquin Hills Rd

ORANGE

El Modena Branch Library*	380 S Hewes St	Btwn Chapman & Fairhaven
Chapman University**	386 N Center St	Btwn Shaffer St & Glassell St (Park in Hasinger Lot)
Orange Unified School District Office**	1401 Handy St	Off Katella Ave & Wanda Rd
Taft Avenue Community Church**	1350 E Taft Ave	Btwn Tustin Ave & Cambridge St
Steve Ambriz Memorial Park**	611 Riverbend Pkwy	Off Lincoln Ave & Glassell St
Santiago Canyon College**	8045 E Chapman Ave	Btwn Newport Blvd & Jamboree Rd (Park in Lot 1)

PLACENTIA

Backs Community Building*	201 Bradford Ave	Btwn Placentia Ave & Kraemer Blvd
Aguirre Building**	505 Jefferson St	Off Alta Vista St & Rose Dr
Placentia Library District**	411 E Chapman Ave	Off Kraemer Blvd
Yorba Linda Water District**	1717 E Miraloma Ave	Btwn Richfield Rd & Van Buren St

RANCHO SANTA MARGARITA

Rancho Santa Margarita Branch Library*	30902 La Promesa	Corner of Richard Reese Way
Bell Tower Regional Community Center**	22232 El Paseo	Off Richard Reese Way

SAN CLEMENTE

San Clemente Community Center*	100 N Calle Seville	Corner of Avenida Del Mar
San Clemente Aquatic Center**	987 Avenida Vista Hermosa	Off Avenida La Pata
San Clemente Library**	242 Avenida Del Mar	Off Calle Seville & Avenida Cabrillo
The Volare Resort**	111 S Avenida De La Estrella	Off Avenida Presidio & El Camino Real

SAN JUAN CAPISTRANO

Reata Park & Event Center*	28632 Ortega Hwy	Off Ortega Hwy
La Sala Auditorium**	31495 El Camino Real	N of Ortega Hwy & E of Camino Capistrano
San Juan Capistrano Community Center**	25925 Camino Del Avion	Btwn Del Obispo St & Alipaz St
Capistrano Unified School District**	33122 Valle Rd	Off 5 Fwy, S of La Novia Ave

SANTA ANA

Southwest Senior Center*	2201 W McFadden Ave	Btwn Fairview St & Raitt St
Orange County Registrar of Voters*	1300 S Grand Ave, Bldg C	Corner of McFadden Ave
El Salvador Community Center**	1825 W Civic Center Dr	Off Raitt St

DATES AND TIMES:

*February 22 - 28, 8am-5pm | February 29 - March 2, 8am-8pm | March 3, 7am-8pm

**February 29 - March 2, 8am-8pm | March 3, 7am-8pm

For additional Vote Center locations, visit ocvote.com/votecenter



Vote Center Locations

Section
8

Dates and hours vary - see below for more info.

SANTA ANA (Continued)

Salgado Recreation Center**	706 N Newhope St	Off Hazard Ave
Santa Anita Recreation Center**	300 S Figueroa St	Off 1st St, E of Harbor Blvd
Roosevelt-Walker Community Center**	816 E Chestnut Ave	Corner of Standard Ave
Delhi Center**	505 E Central Ave	Off Warner Ave
Santa Ana College**	1530 W 17th St	Off Bristol (Park in Lot 11)
Santa Ana Police Community Room**	60 Civic Center Dr	Btwn N Flower & N Bristol (Park in Structure)
Fairview Warner Shopping Center**	2413 S Fairview St, Unit F	Btwn Warner Ave & W Segerstrom Ave
Downtown Plaza**	407 E 1st St, Ste 2CD	Btwn N Spurgeon St & Lacy St
Latino Health Access**	450W 4th St	Btwn Ross St & Broadway
Orange County First Assembly of God**	1440 E Santa Clara Ave	Off Grand Ave
Foothill High School**	19251 Dodge St	Corner of Newport Ave & Foothill Blvd

SEAL BEACH

City of Seal Beach Fire Station 4B*	3131 N Gate Rd	Off Seal Beach Blvd
Seal Beach Senior Center**	707 Electric Ave	Btwn Main St & Marina Dr

STANTON

Community Center at Stanton City Hall*	7800 Katella Ave	Btwn Western Ave & Beach Blvd
Stanton Central Park**	10660 Western Ave	Btwn Cerritos Ave & Katella Ave

TRABUCO CANYON

Trabuco Canyon Water District*	32003 Dove Canyon Rd	Off Plano Trabuco
--------------------------------	----------------------	-------------------

TUSTIN

Clifton C Miller Community Center*	300 Centennial Way	Btwn Main St & 1st St
Columbus Tustin Activity Center**	17522 Beneta Way	Btwn Prospect Ave & Holt Ave
Community Center at The Market Place, 2nd floor**	2961 El Camino Real	Btwn Jamboree Rd & Myford Rd
Tustin Family and Youth Center**	14722 Newport Ave	Corner of Sycamore Ave
Fairfield Inn & Suites Tustin**	15011 Newport Ave	Off Edinger Ave

WESTMINSTER

Miriam Warne Community Building*	14491 Beach Blvd	Corner of Hazard Ave
Sigler Park/Family Resource Center**	7200 Plaza St	Btwn Westminster Blvd & Main St
Westminster Branch Library**	8180 13th St	Btwn Beach Blvd & Newland St
Town Hall Clubhouse at Westminster Village**	5200 Blackpool Rd	Off Bolsa Chica Rd & Westminster Blvd
Storefront at 6480 Westminster**	6480 Westminster Blvd	Corner of Edwards St

YORBA LINDA

Thomas Lasorda Jr Field House*	4701 Casa Loma Ave	Btwn Imperial Hwy & Yorba Linda Blvd
Yorba Linda Public Library**	18181 Imperial Hwy	Btwn Lemon Dr & Olinda St
Danish Lutheran Church & Cultural Center**	16881 Bastanchury Rd	Btwn Rose Dr & Prospect Ave
Church of Grace**	22653 Old Canal Rd	At Yorba Linda Blvd & Savi Ranch Pkwy
Yorba Linda Presbyterian Church**	19301 Yorba Linda Blvd	Btwn Kellog Dr & Palm Ave

All Vote Center sites meet usable accessibility requirements unless otherwise noted.

DATES AND TIMES:

*February 22 - 28, 8am-5pm | February 29 - March 2, 8am-8pm | March 3, 7am-8pm

**February 29 - March 2, 8am-8pm | March 3, 7am-8pm

For additional Vote Center locations, visit ocvote.com/votecenter



Ballot Drop Box Locations

Section
9

Available 24/7 starting February 3 until March 3 at 8pm.

ALISO VIEJO

Aliso Viejo City Hall	12 Journey	Btwn Pacific Park Dr & Aliso Creek Rd
Iglesia Park Community Center	24671 Via Iglesia	Off Moulton Pkwy

ANAHEIM

Chaparral Park	1770 W Broadway	Btwn Euclid St & Nutwood St
East Anaheim Community Center	8201 E Santa Ana Canyon Rd	W of Weir Canyon Rd
Euclid Branch Library	1340 S Euclid St	Btwn Cerritos Ave & Ball Rd
Granada Square	2021 E La Palma Ave	Btwn State College Blvd & Miraloma Ave
Ponderosa Family Resource Center	320 E Orangewood Ave	Btwn Haster St & Lewis St
Sage Park	1313 W Lido Pl	Off W North St, E of N Loara St

BREA

Brea Civic & Cultural Center	1 Civic Center Circle	Off E Birch St
Brea Sports Park	3333 E Birch St	Btwn Valencia Ave & Kraemer Blvd

BUENA PARK

Buena Park Metrolink Station	8400 Lakeknoll Dr	W of Dale St
Ehlers Event Center	8150 Knott Ave	Btwn Crescent Ave & La Palma Ave
The Source OC	6940 Beach Blvd	1st Floor, Next to Jamba Juice

COSTA MESA

Coastal Heights Senior Living (Drive-Thru Only)	2283 Fairview Rd	Btwn Wilson St & Fair Dr
Mesa Verde Branch Library	2969 Mesa Verde Dr E	Corner of Baker St
Mesa Water District	1965 Placentia Ave	Btwn W 19th St & Victoria St
TeWinkle Park Athletic Complex	980 Arlington Dr	Btwn Newport Blvd & Fairview Rd

CYPRESS

City of Cypress Community Center	5700 Orange Ave	Btwn Valley View St & Walker St
Veterans Park	4554 Avenida Granada	Btwn Moody St & Denni St

DANA POINT

Dana Point Branch Library	33841 Niguel Rd	Btwn PCH & Stonehill Dr
---------------------------	-----------------	-------------------------

FOUNTAIN VALLEY

Fountain Valley Branch Library	17635 Los Alamos St	Btwn Slater & El Monterey Ave
The Center at Founders Village	17967 Bushard St	Corner of Talbert Ave

FULLERTON

A.R. Mart	1701 Orangethorpe Ave	Corner of Brookhurst Rd
Fullerton College	321 E Chapman Ave	In Parking Lot Btwn Berkeley Ave & Lemon St
Fullerton Fire Station No. 6	2691 Rosecrans Ave	Btwn Beach Blvd & Gilbert St
Fullerton Metrolink Station	120 E Santa Fe Ave	Btwn Harbor Blvd & Lemon St
Fullerton Municipal Airport	4011 W Commonwealth Ave	Btwn Dale St & Gilbert St

GARDEN GROVE

GGUSD Assessment & Registration Ctr & Family Rsrc Ctr	13611 Clinton St	Btwn Trask Ave & Westminster Ave
Chapman Branch Library	9182 Chapman Ave	Btwn Magnolia Ave & Gilbert St
Garden Grove Unified School District Education Center	10331 Stanford Ave	Btwn Nutwood St & Brookhurst St
Magnolia Park Family Resource Center	11402 Magnolia St	Btwn Katella Ave & Orangewood
West Grove Park	5372 Cerulean Ave	Off Blackmer St, S of Lampson Ave

HUNTINGTON BEACH

5 Points Plaza	18591 Main St	Btwn Ellis & Garfield Ave
Bob's Discount Furniture	16242 Beach Blvd	Btwn Edinger Ave & Heil Ave
HB Professional Plaza	714 Adams Ave	Btwn Beach Blvd & Delaware
Huntington Beach Civic Center	2000 Main St	Btwn Yorktown & Utica Ave

For additional Drop Box locations, visit ocvote.com/dropbox



Ballot Drop Box Locations

Section
9

Available 24/7 starting February 3 until March 3 at 8pm.

HUNTINGTON BEACH (Continued)

Huntington Professional Plaza	20932 Brookhurst St	Btwn Atlanta Ave & Indianapolis Ave
Main Street Branch Library	525 Main St	Corner of 6th St
Vista Centre	17483 Beach Blvd	Btwn Slater & Warner

IRVINE

Orange County United Way (Drive-Thru Only)	18012 Mitchell S	Corner of Red Hill
Harvard Community Athletic Park	14701 Harvard Ave	Btwn Walnut & Irvine Ctr Dr
Heritage Park Community Center	14301 Yale	Next to Fine Arts Center & Community Center
Irvine Metrolink Station	15215 Barranca Pkwy	Off Ada, On Loop Rd
Rancho San Joaquin Senior Center	3 Ethel Coplen Way	Off Culver, S of Michelson
Trabuco Center	5701 Trabuco Rd	Btwn Sand Canyon & Jeffrey
Turtle Rock Community Park	1 Sunnyhill	Btwn Shady Canyon & Turtle Rock
University Park Branch Library	4512 Sandburg Way	Corner of Lexicon, S of Michelson
Woodbury Community Park	130 Sanctuary	Off Long Meadow & Jeffrey

LA HABRA

La Habra Branch Library	221 E La Habra Blvd	Btwn Euclid St & Cypress St
La Habra Family Resource Center	501 S Idaho St	Btwn La Habra Blvd & Lambert Rd

LA PALMA

La Palma City Hall	7822 Walker St	Btwn La Palma Ave & Orangethorpe
--------------------	----------------	----------------------------------

LADERA RANCH

Ladera Ranch Branch Library	29551 Sienna Pkwy	Btwn Crown Valley & O'Neill
Orange County Fire Authority Station 5B	5B Station Way	Off Antonio Pkwy

LAGUNA BEACH

Laguna Beach Branch Library	363 Glenneyre St	Corner of Laguna Ave
-----------------------------	------------------	----------------------

LAGUNA NIGUEL

Laguna Niguel Library	30341 Crown Valley Pkwy	Btwn Club House Dr & Alicia Pkwy
Laguna Niguel/Mission Viejo Metrolink Station	28200 Forbes Rd	S of Crown Valley, W of 5 Fwy
Orange County Fire Station 49	31461 Golden Lantern	N of Camino Del Avion

LAGUNA WOODS

Laguna Woods City Hall	24264 El Toro Rd	Btwn Moulton Pkwy & Paseo De Valencia
------------------------	------------------	---------------------------------------

LAKE FOREST

Heroes Park	25420 Jeronimo Rd	Btwn Los Alisos Blvd & El Toro Rd
Lake Forest Sports Park	28000 Rancho Pkwy	Enter on Vista Terrace, Off Lake Forest Dr

LOS ALAMITOS

Los Alamitos Community Center	10911 Oak St	Off Katella Ave, W of Los Alamitos Blvd
-------------------------------	--------------	---

MISSION VIEJO

Florence Joyner Olympiad Park (Drive-Thru Only)	22761 Olympiad Rd	Btwn Alicia Pkwy & Melinda Rd
Norman P. Murray Community & Senior Center	24932 Veterans Way	Btwn La Paz Rd & Jeronimo Rd
Pavion Park	24051 Pavion	Off Jeronimo Rd, W of Olympiad Rd

NEWPORT BEACH

OASIS Senior Ctr Auxiliary Parking Lot (Drive-Thru Only)	Corner of 5th Ave & Marguerite Ave	Corner of 5th Ave & Marguerite Ave
Newport Beach Public Library (Drive-Thru Only)	1000 Avocado Ave	Driveway to Civic Center Parking
Bob Henry Park	900 Dover Dr	Corner of Castaways Ln
Sidewalk - Corner of Avon St & Riverside Ave	Corner of Avon St & Riverside Ave	Btwn PCH & Cliff Dr

ORANGE

El Modena Branch Library	380 S Hewes St	Btwn Chapman & Fairhaven
Orange Public Library	407 E Chapman Ave	Btwn Glassell & Tustin

For additional Drop Box locations, visit ocvote.com/dropbox



Ballot Drop Box Locations

Section
9

Available 24/7 starting February 3 until March 3 at 8pm.

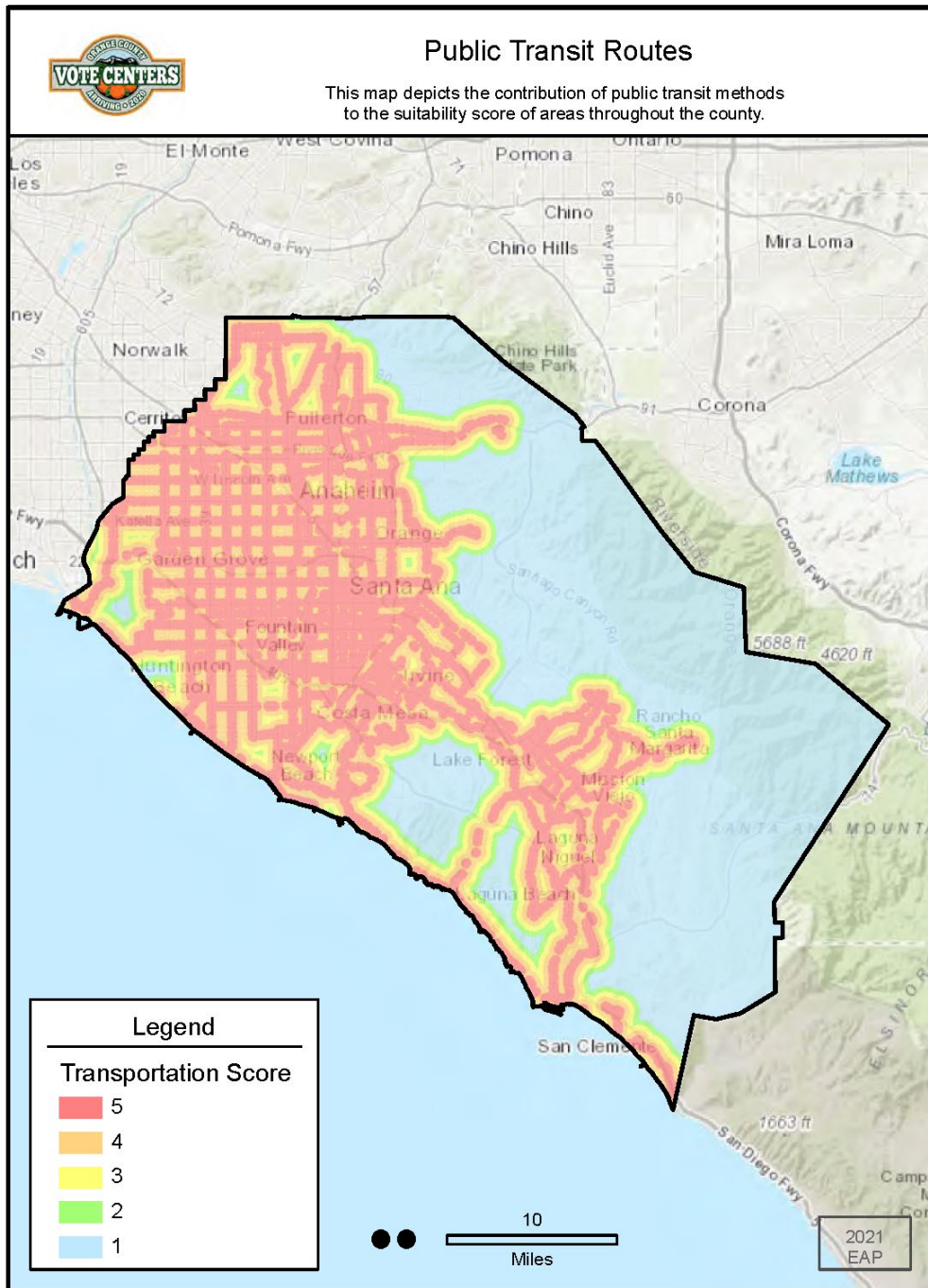
ORANGE (Continued)		
Taft Branch Library	T40 E Taft Ave	Corner of Cambridge
PLACENTIA		
Koch Recreation Center	2210 Valencia Ave	Btwn Bastanchury & Golden Ave
Whitten Center	900 S Melrose St	Btwn Orangethorpe & Miraloma Ave
RANCHO SANTA MARGARITA		
Calvary Chapel Rancho Sta Margarita	30615 Avenida De Las Flores	Corner of Banderas
Rancho Santa Margarita Branch Library	30902 La Promesa	Corner of Richard Reese Way
SAN CLEMENTE		
San Clemente Municipal Golf Course (Drive-Thru Only)	150 E Avenida Magdalena	Off S El Camino Real, In Golf Course parking lot
Jim Johnson Memorial Sports Park	560 Avenida Vista Hermosa	Btwn S Fey & Avenida Costa Azul
San Clemente City Hall	910 Calle Negocio	Off Calle Amanecer, E of Avenida Pico
SAN JUAN CAPISTRANO		
La Sala Auditorium	31495 El Camino Real	N of Ortega Hwy, E of Camino Capistrano
SANTA ANA		
AltaMed	1400 N Main St	Btwn Seventeenth St & Washington Ave
County Administration South	601 N Ross St	Btwn Santa Ana Blvd & Civic Center Dr
Goodwill Computer Works	412 N Fairview St	Btwn First St & Fifth St
Iglesia de Dios Pentecostal, M.I.	1025 W Memory Ln	Btwn Bristol St & Flower St
Johnson Chapel A.M.E. Church	1306 W 2nd St	Enter on Hesperian St
OC Health Care Agency	1725 W 17th St	Btwn Bristol St & English St
Orangewood Foundation (Drive-Thru Only)	1575 E 17th St	Btwn Grand Ave & Cabrillo Park Dr
Orange County Registrar of Voters	1300 S Grand Ave, Bldg C	Corner of McFadden Ave
Santa Ana Regional Transportation Center	1000 E Santa Ana Blvd	Btwn Grand Ave & Santiago St
SEAL BEACH		
Mary Wilson Branch Library	707 Electric Ave	Btwn Main St & Marina Dr
STANTON		
Stanton Branch Library	7850 Katella Ave	Btwn Western Ave & Beach Blvd
TRABUCO CANYON		
Concourse Park	18931 Saddleback Ranch Rd	Btwn Glenn Ranch & Ridgeline
TUSTIN		
OC Animal Care	1630 Victory Rd	Btwn Red Hill Ave & Armstrong Ave
Tustin Metrolink Station	2975 Edinger Ave	Off Jamboree Rd
Tustin Sports Park	12850 Robinson Dr	Btwn Irvine Blvd & Jamboree Rd
VILLA PARK		
Villa Park City Hall	17855 Santiago Blvd	Btwn Taft Ave & Villa Park Rd
WESTMINSTER		
West County Professional & Medical Center	14120 Beach Blvd	S of Westminster Blvd (Enter on 15th St)
YORBA LINDA		
Yorba Linda City Hall (Drive-Thru Only)	4845 Casa Loma Ave	Btwn Yorba Linda Blvd & Imperial Hwy
Bryant Ranch Park	24705 Paseo De Toronto	Btwn Camino De Bryant & Via Lomas De Yorba E
Yorba Linda Arroyo Park/Police Services	20994 Yorba Linda Blvd	Btwn Village Center Dr & Yorba Ranch Rd

All Ballot Drop Boxes meet usable accessibility requirements unless otherwise noted as Drive-Thru Only.

For additional Drop Box locations, visit ocvote.com/dropbox

Voter's Choice Act Criteria Maps

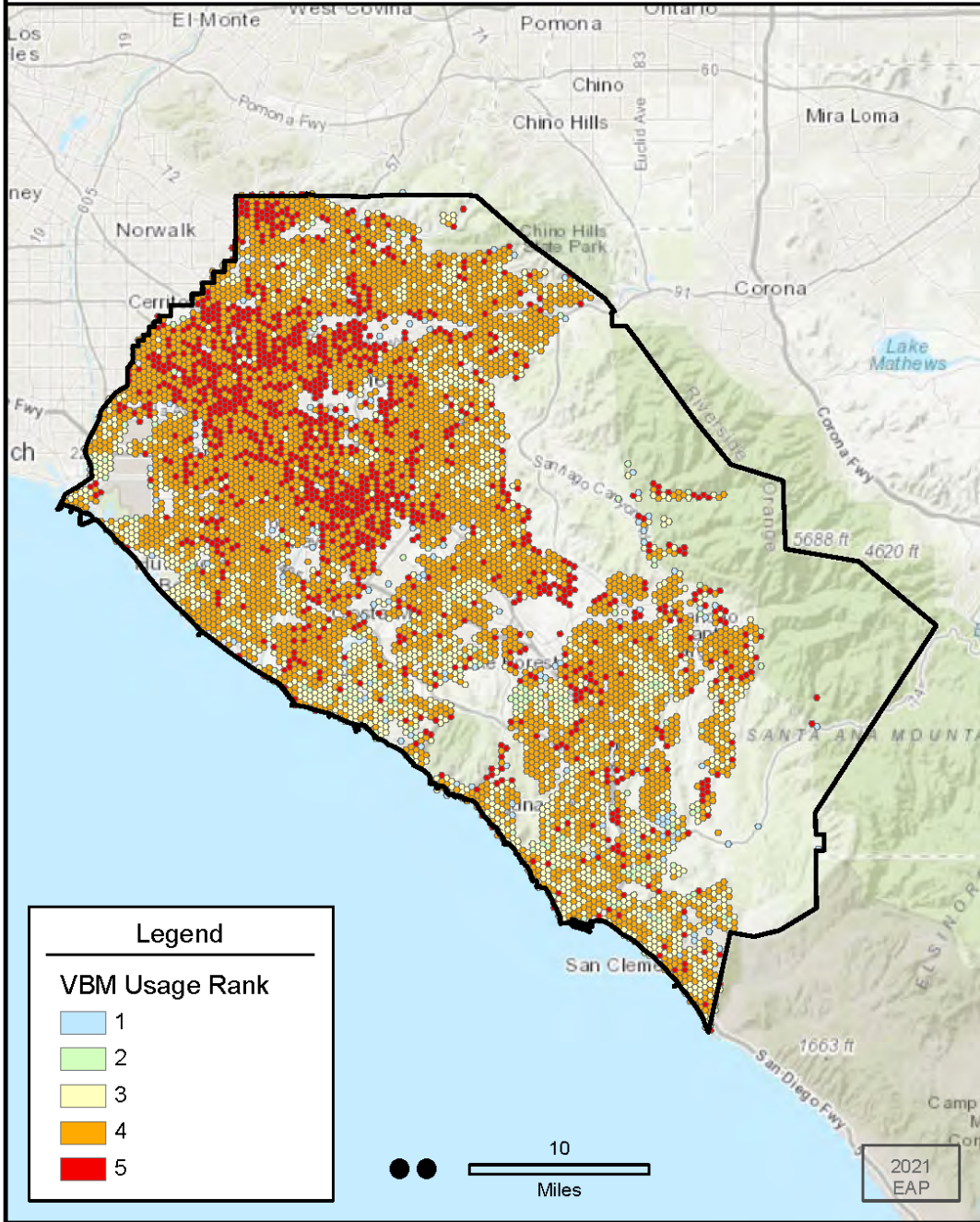
Public Transit Routes



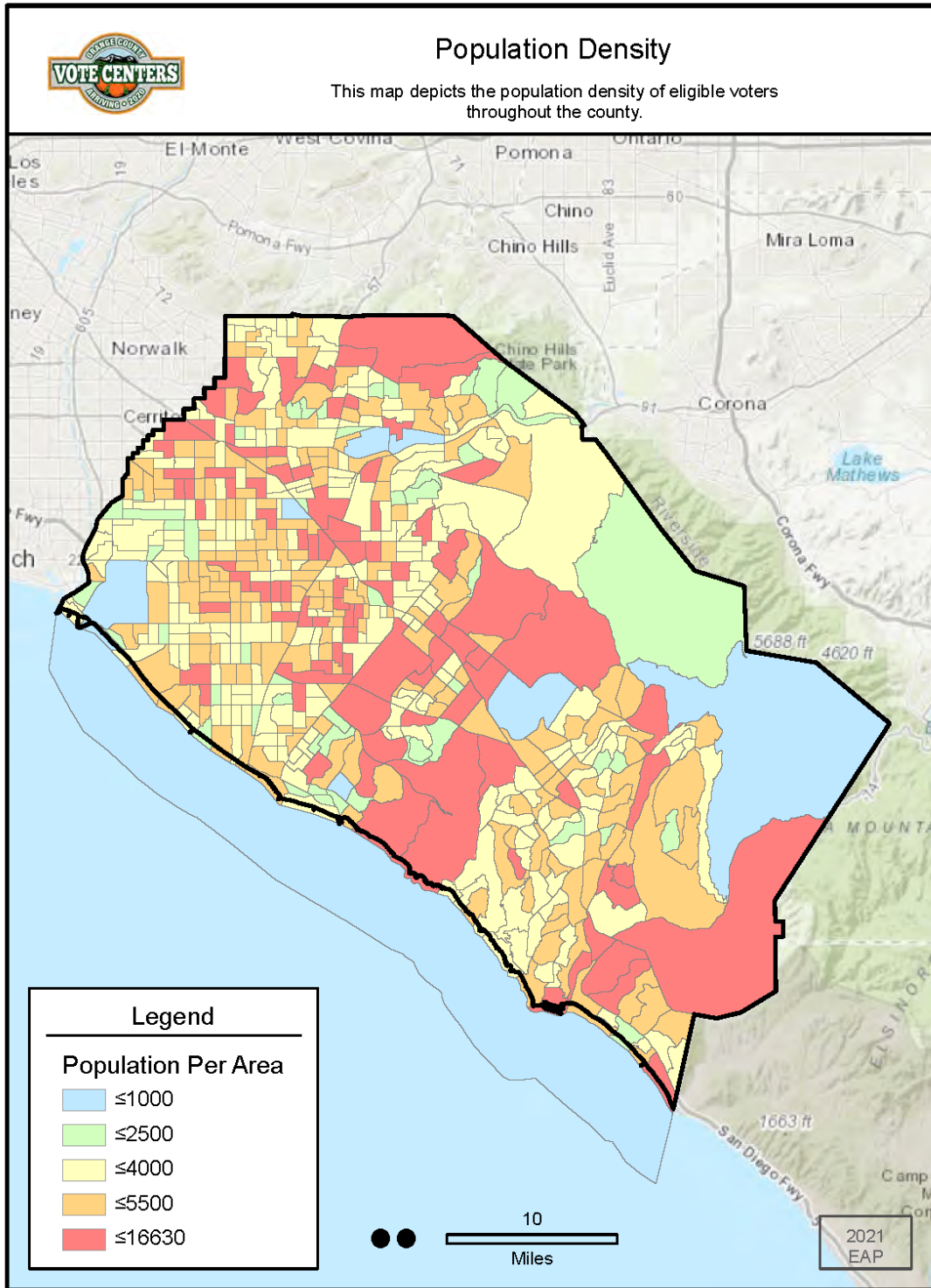


Areas with Low Vote by Mail Usage

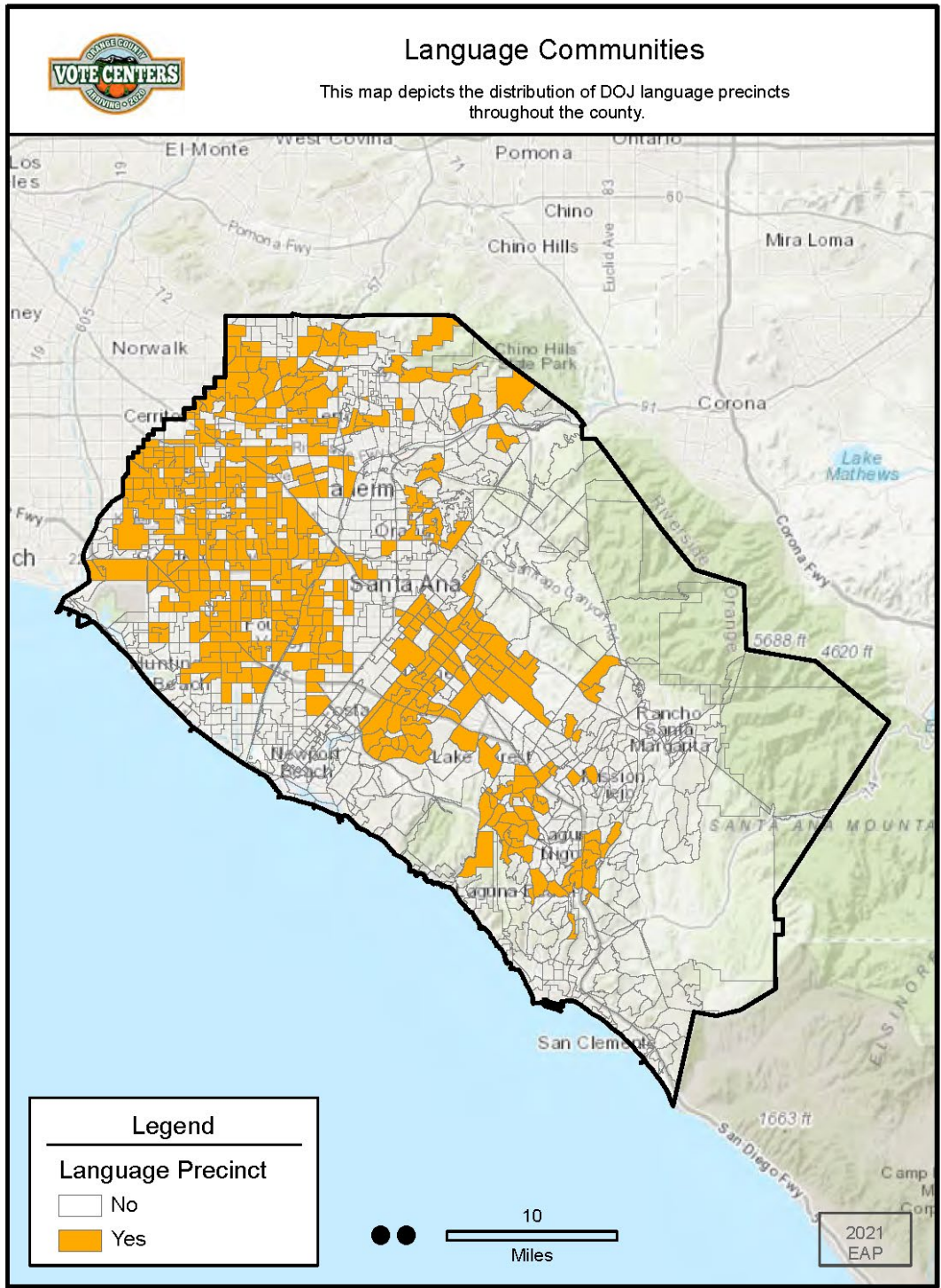
This map depicts the distribution of Vote by Mail usage by registered voters throughout the county



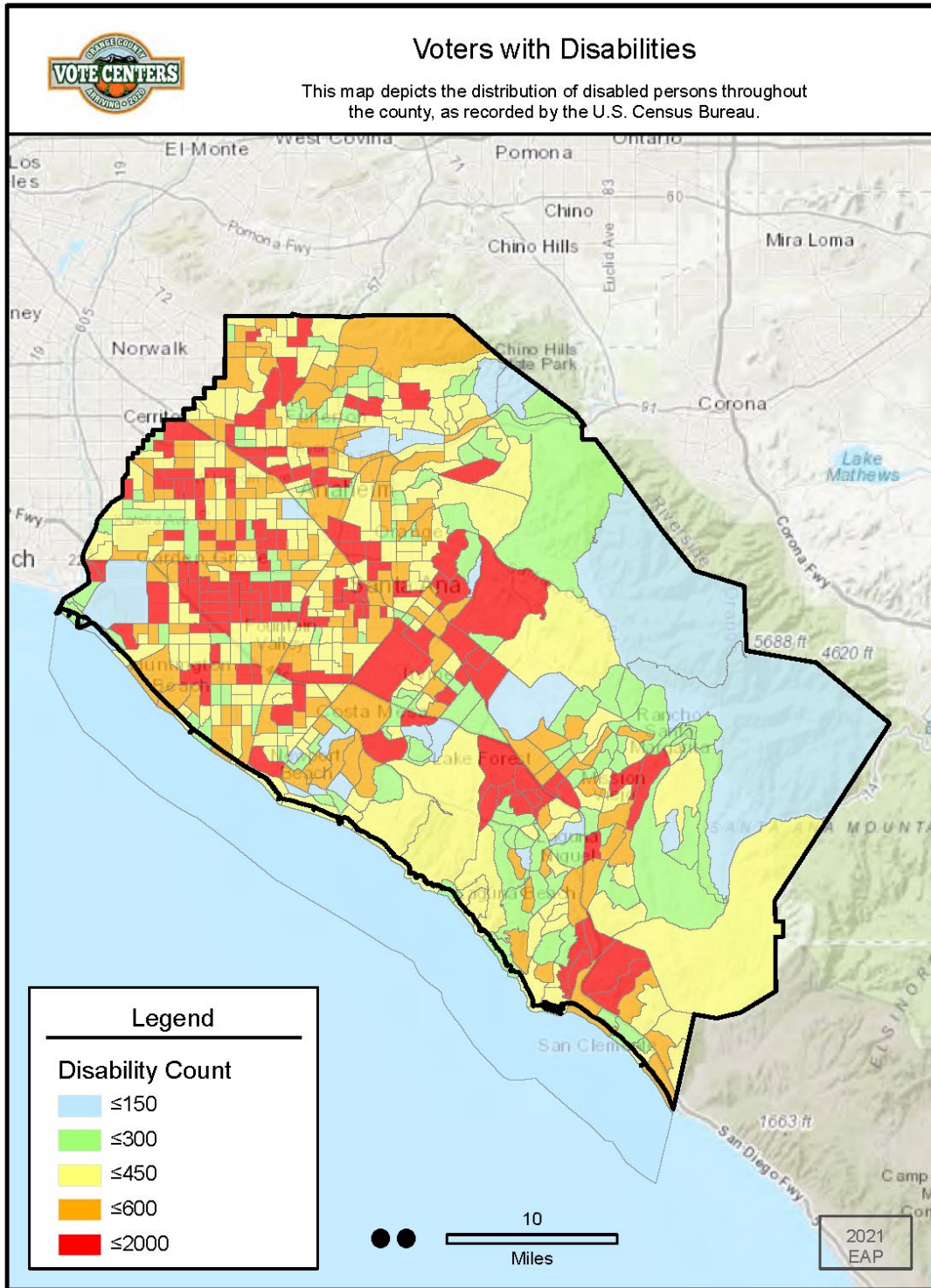
Population Density



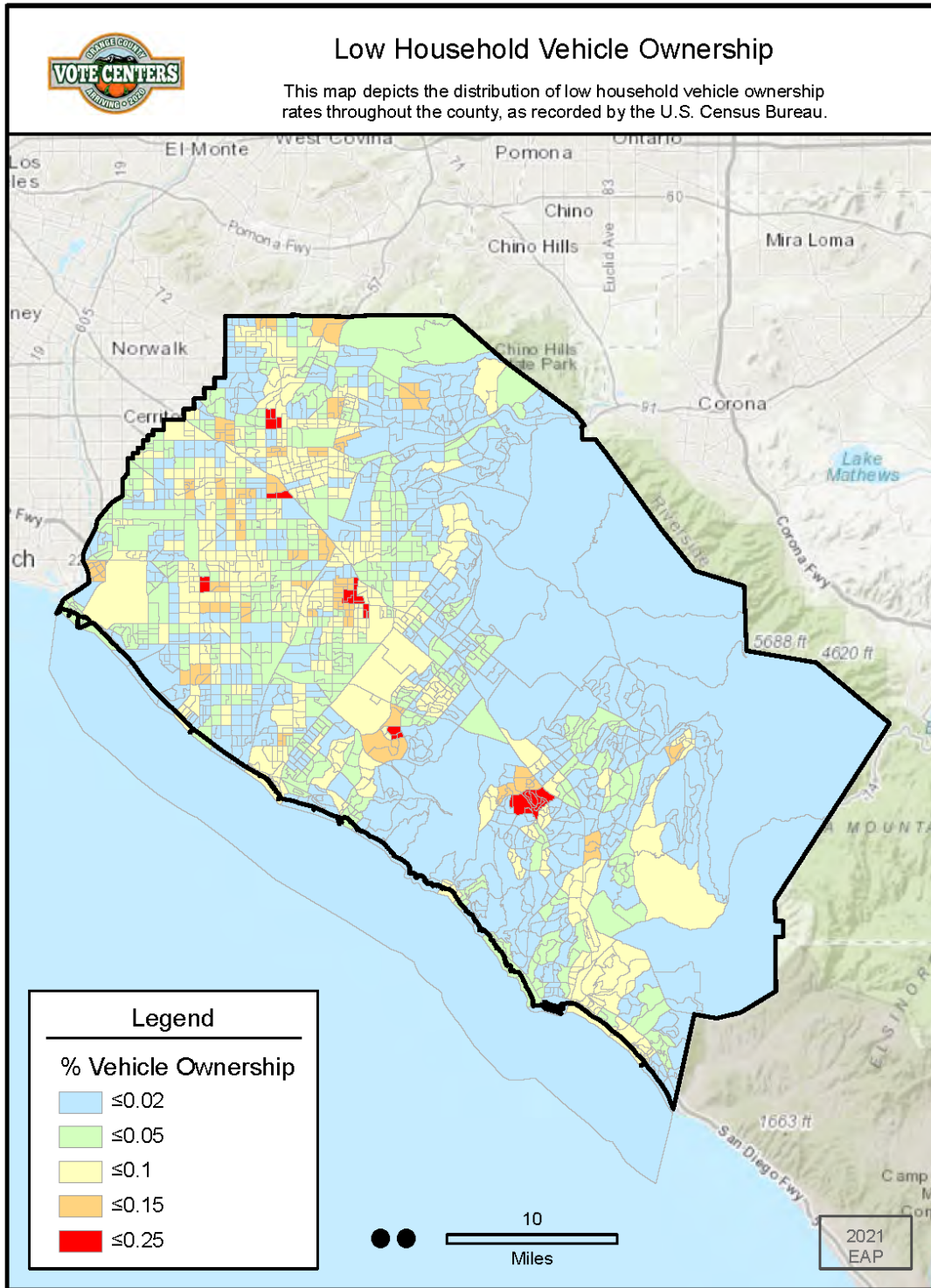
Language Communities



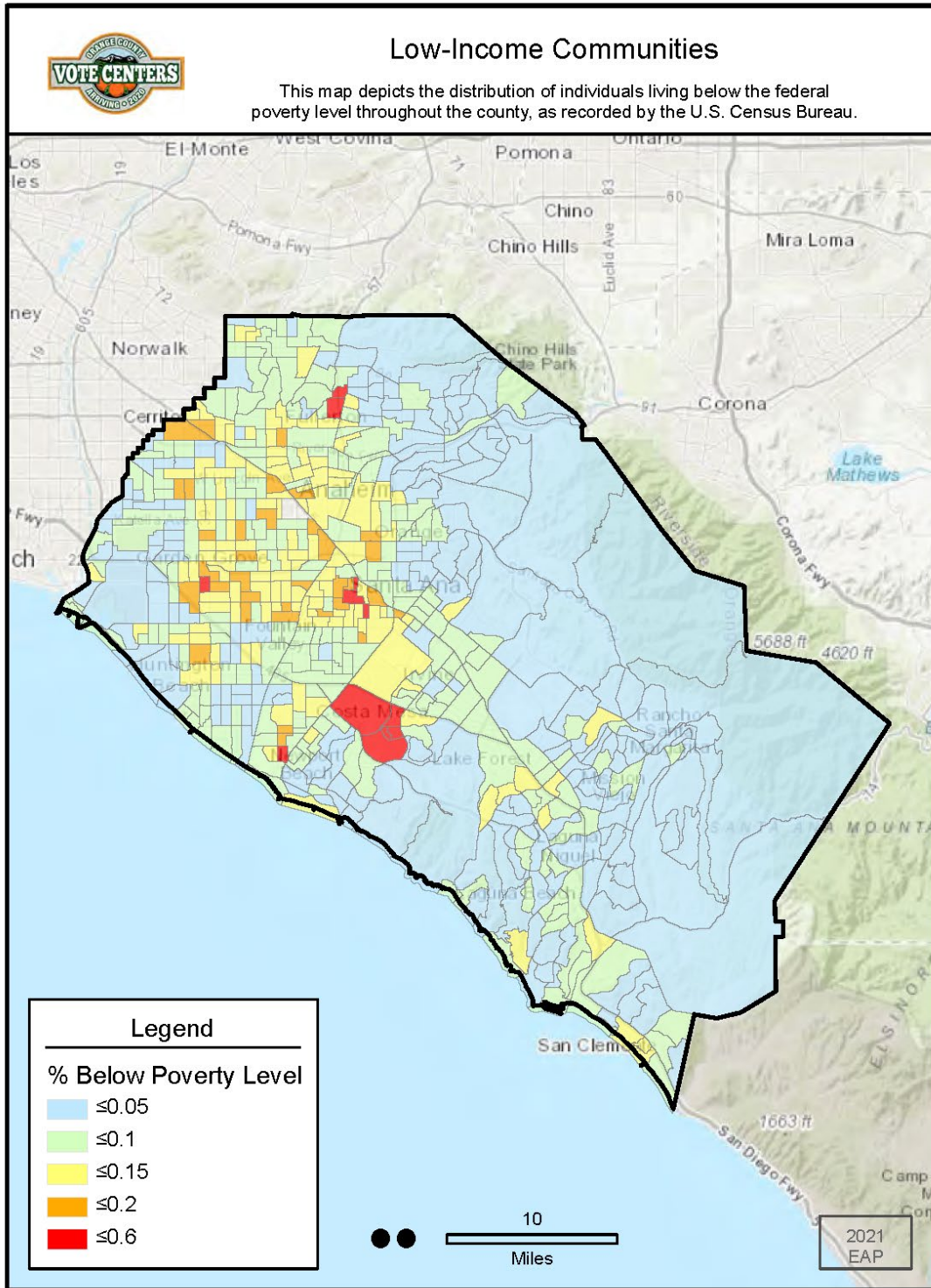
Voters with Disabilities



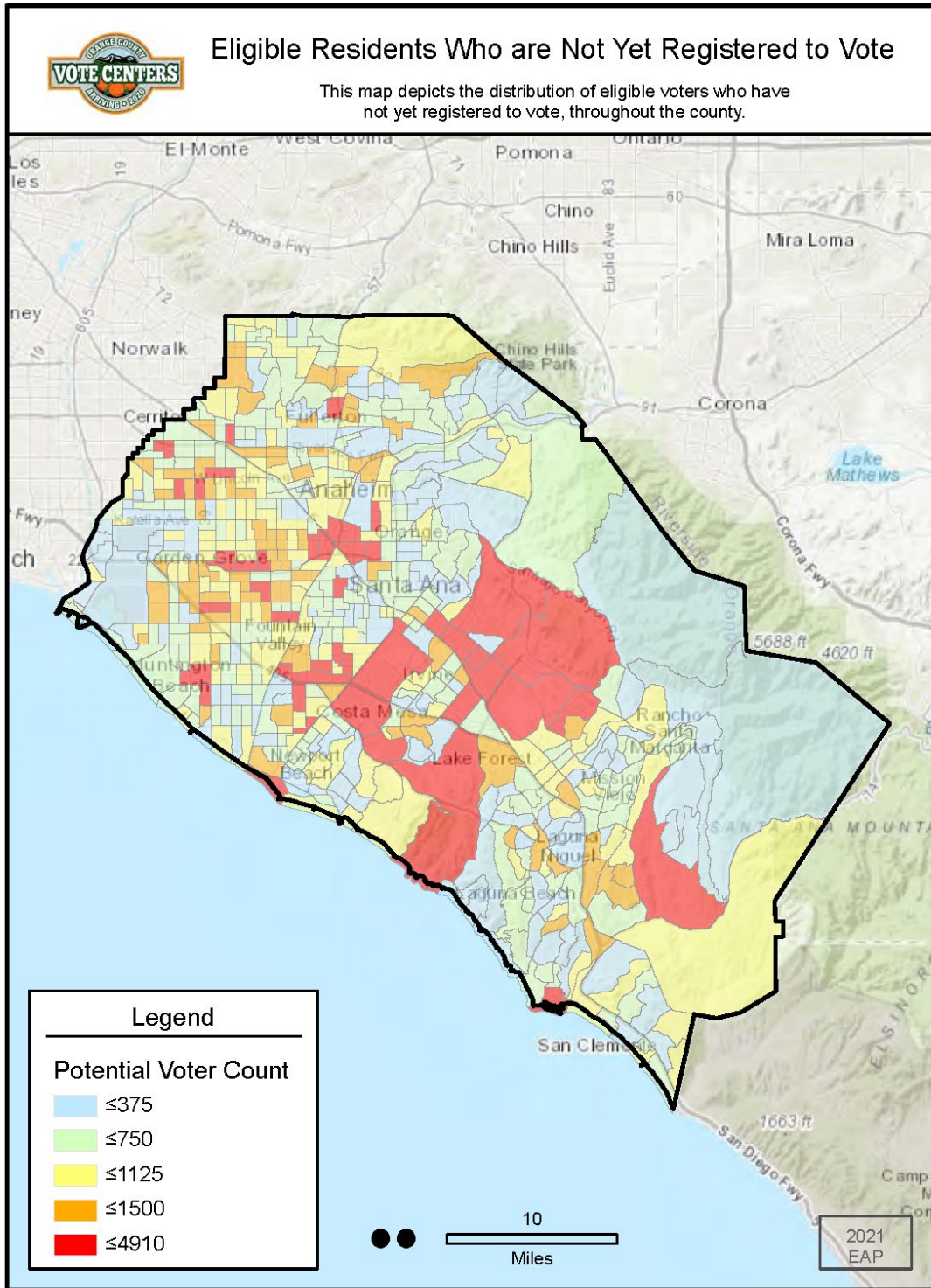
Low Household Vehicle Ownership



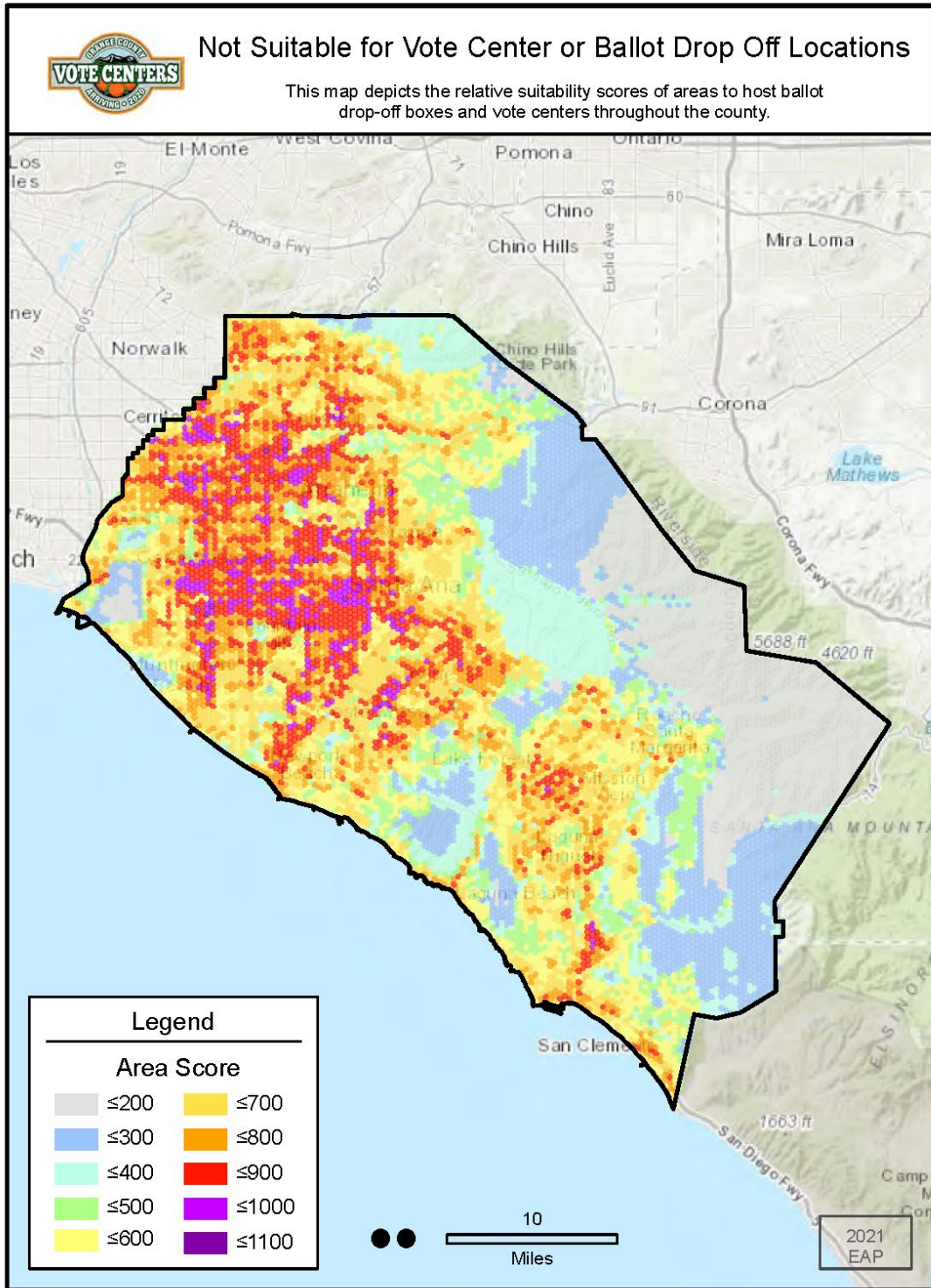
Areas with Low-Income Communities



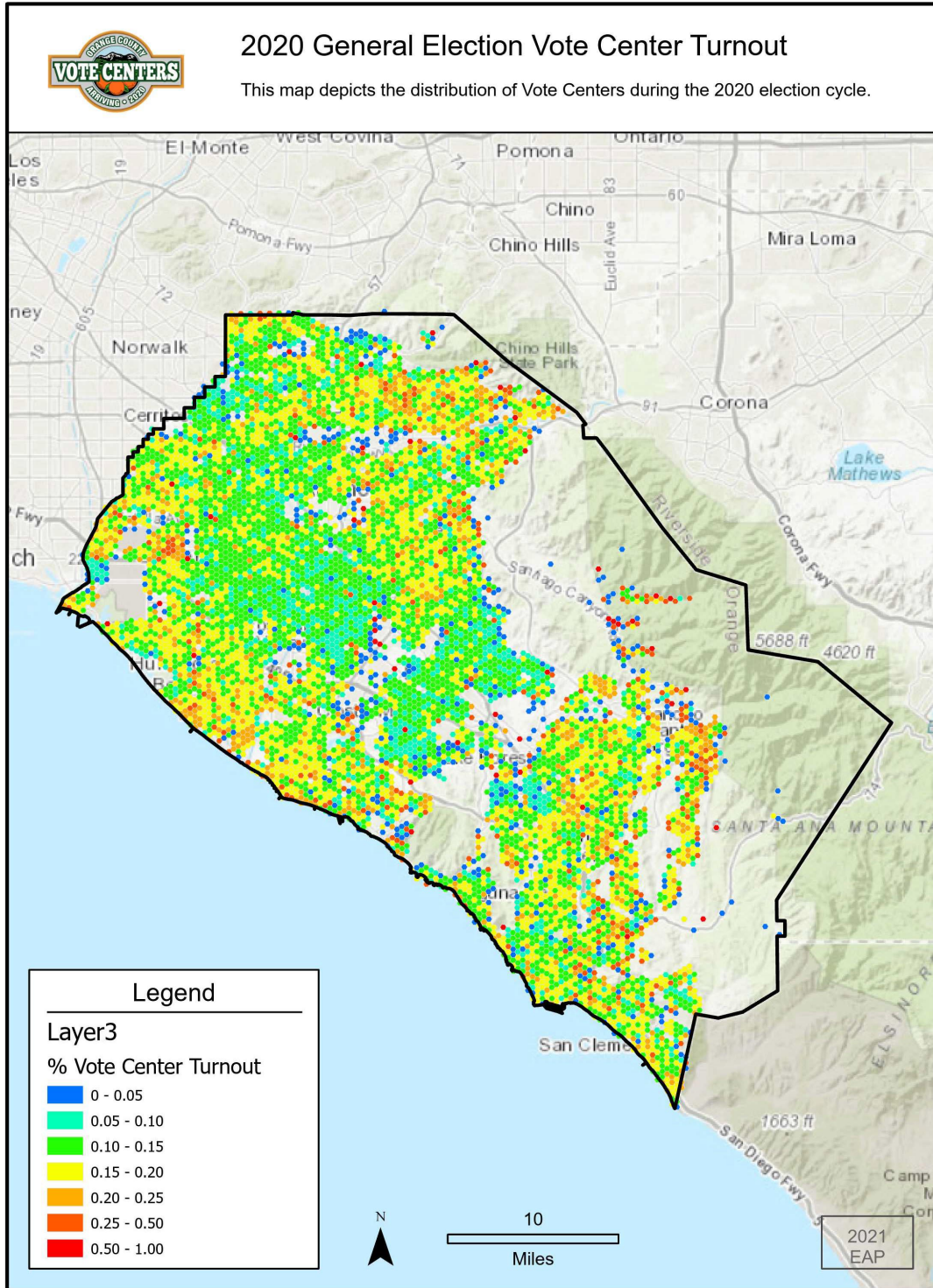
Areas with Eligible Residents Who are Not Yet Registered to Vote



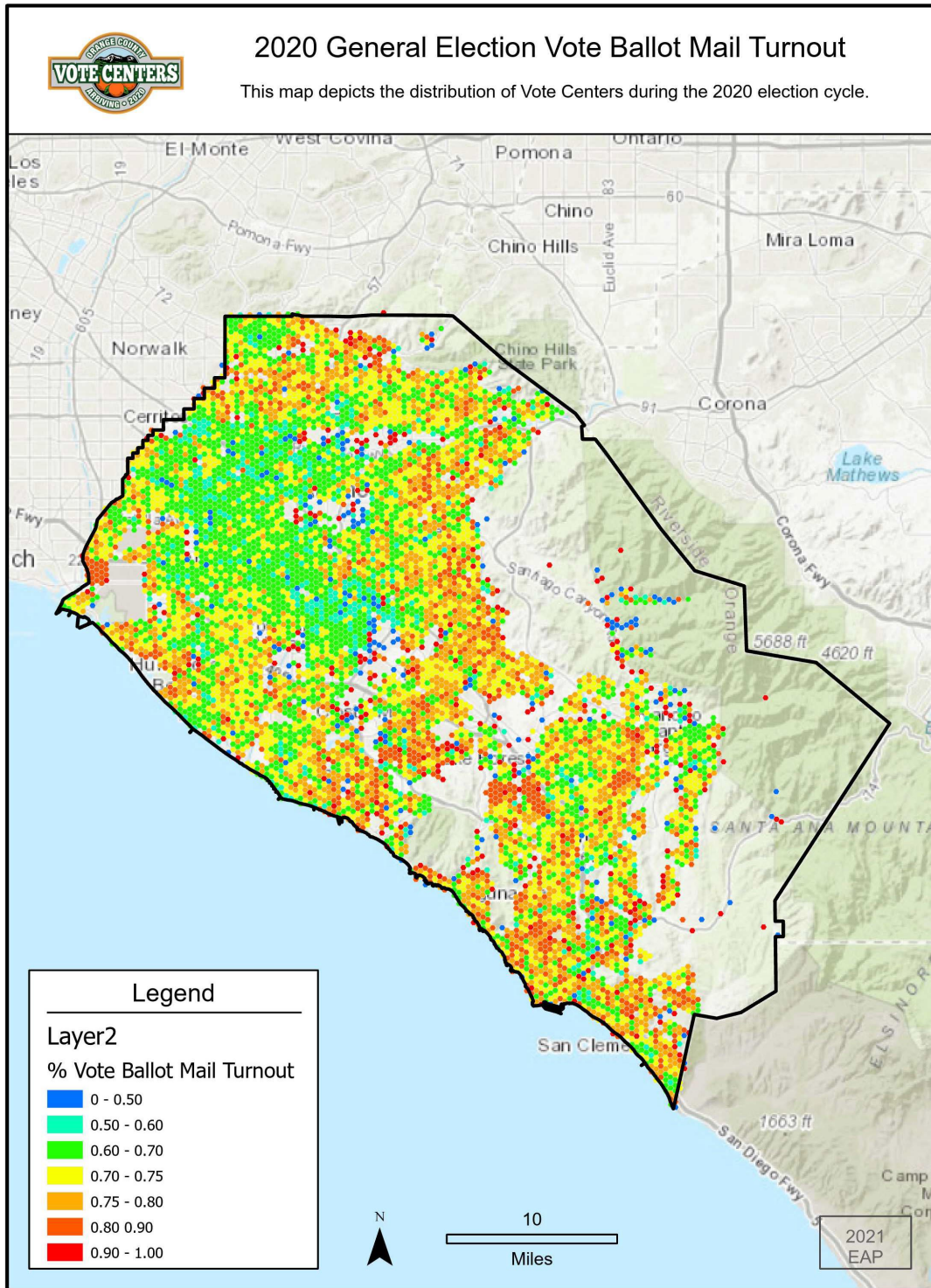
Areas Not Suitable for Vote Center or Ballot Drop Box Locations



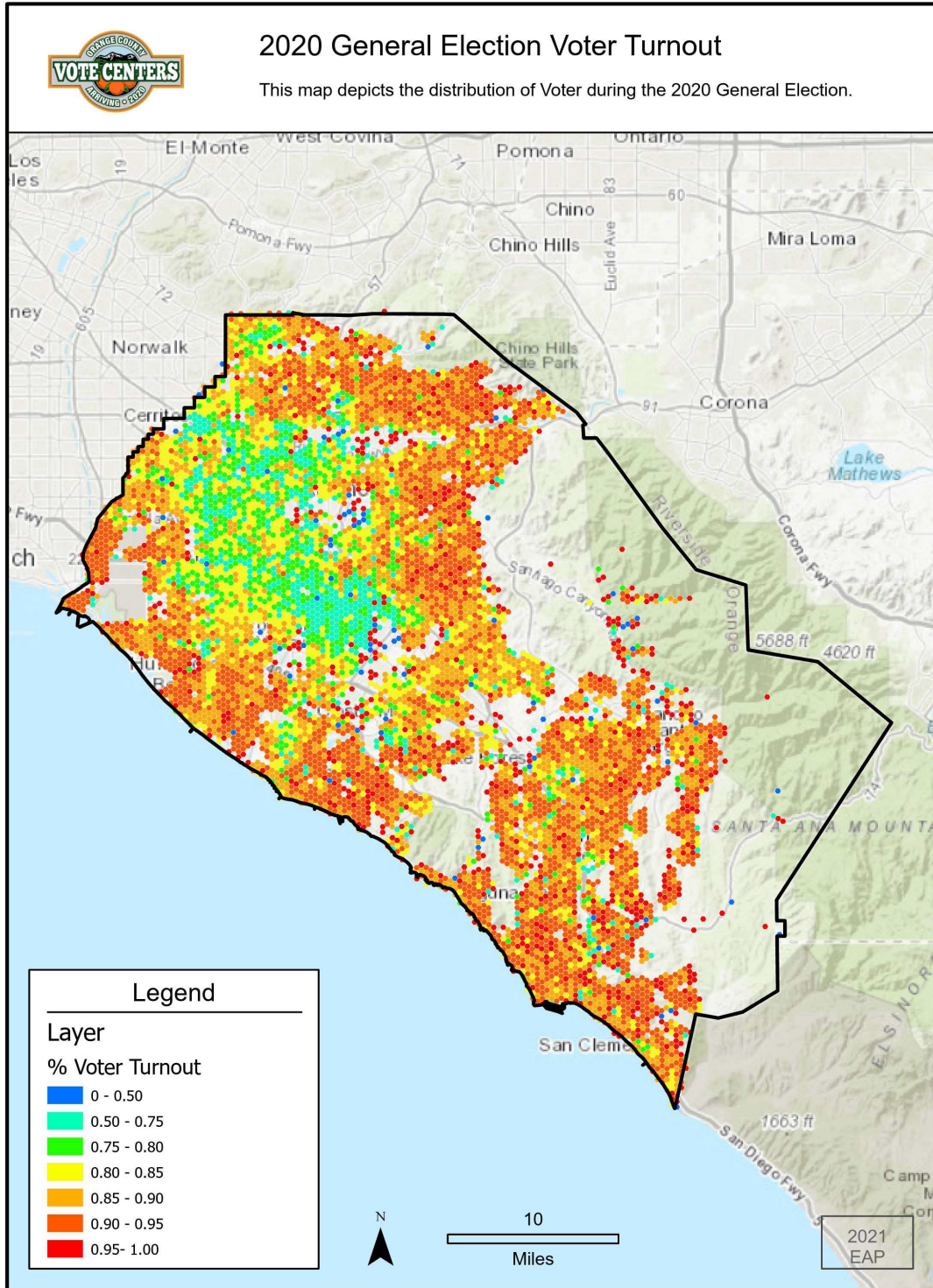
2020 General Election – Turnout by Vote Center



2020 General Election – Vote-By-Mail Turnout



2020 General Election – Voter Turnout Distribution



Community Event Calendar List

The list below represents potential and targeted community events OCROV plans to pursue in 2021 and 2022, depending on health and safety guidelines. Events will continually be added, and suggestions can be shared via email to ocvoter@rov.ocgov.com.

Potential Community Events Calendar 2021 - 2022		
Month	Event Name	Organizer
January	Asian Garden Mall Flower Festival	Asian Garden Mall
January	Citizenship Ceremonies	United States District Court, Central District of California
February	ICS Chinese New Year Celebration	Irvine Chinese School (ICS) and South Coast Chinese Cultural Association (SCCCA)
February	Irvine Evergreen Chinese Senior Association New Year Celebration	Irvine Evergreen Chinese Senior Association
February	Irvine High School Multi-Culture Festival	Irvine High School Parent, Teacher, and Student Association
February	Candidate Academy	Orange County Labor Federation
February	UVSA Tet Festival	Union of Vietnamese Student Association
March	Braille Institute of America Voter Outreach and Education Presentation	Braille Institute of America
March	Celebrate Life of Cesar Chavez	St. Boniface Church

Potential Community Events Calendar 2021 - 2022

Month	Event Name	Organizer
March	Celebrating Korean American Leadership	UCI Korean American Alumni Chapter
March	KinderCaminata	Cypress College
March	KinderCaminata	Fullerton College
March	KinderCaminata	Santa Ana College
March	Laguna Niguel High School Job & College Fair	Laguna Niguel High School
March	Lunar New Year Celebration	Asian American Senior Citizens Service Center
March	Orange County Lantern Festival	Pacific Symphony and South Coast Chinese Cultural Center
March	Persian New Year Festival	Iranian-American Community Group of Orange County
March	Persian New Year Picnic Day	Network of Iranian-American Professionals of Orange County
March	San Juan Hills High School Voter Registration Training	San Juan Hills High School
March	ShamROCK n' RUN	St. Jude Medical Center
March	Westminster Spring Festival	City of Westminster
April	Arts Alive Festival	City of Mission Viejo
April	Beckman High School Meet the Professionals Fair	Beckman High School

Potential Community Events Calendar 2021 - 2022

Month	Event Name	Organizer
April	City of Westminster Spring Festival	City of Westminster
April	Cypress Farmers Market	City of Cypress
April	Dia del Niño	City of Santa Ana
April	Dia del Niño	El Centro Cultural De Mexico
April	DTSA Art Walk	Downtown Santa Ana
April	Earth Day Event	Golden West College
April	Feria de Abril	Feria Los Alamitos
April	Friendly Centers Resource Networking Event	The Friendly Center
April	Irvine Valley College Spring Job Fair	Irvine Valley College
April	Katella High School Voter Education Week Event	Katella High School
April	Voter Registration Training	League of Women Voters of Orange County
April	Love Buena Park	City of Buena Park
April	Media Arts Santa Ana (MASA) Mixer	MASA/OC Film Fiesta
April	Persian New Year Festival	Network of Iranian-American Professionals of Orange County
April	Dia del Niño	OC Fairgrounds

Potential Community Events Calendar 2021 - 2022

Month	Event Name	Organizer
April	Renters Protection Forum	Orange County Communities Organized for Responsible Development
April	Summer Youth Job Fair	Employment Development Department
April	OC LGBTQ Youth Convening	LGBT Center
May	5 de Mayo Festival Anaheim	City of Anaheim
May	Asian Pacific American Heritage Month Forum	Asian Americans Advancing Justice – Orange County
May	Asian American Pacific Islander Heritage Month Celebration	Southern California Edison
May	Battle of the Mariachis	Mission San Juan Capistrano
May	CIELO Showcase	CIELO
May	Cinco de Mayo Festival	City of San Clemente
May	Cinco De Mayo In Tustin	City of Tustin
May	Student Tabling Event	CSU Fullerton
May	Student Tabling Event	Cypress College
May	Dancing Out Stigma	Bowers Museum
May	Downtown Anaheim Farmers Market	City of Anaheim
May	Estrella Awards	Orange County Hispanic Chamber of Commerce

Potential Community Events Calendar 2021 - 2022

Month	Event Name	Organizer
May	FaCT Conference	Families and Communities Together
May	Heartbeat of Mexico	Chapman University
May	Irvine Evergreen Chinese Senior Association Monthly Meeting	Irvine Evergreen Chinese Senior Association
May	Irvine Korean Cultural Festival	Irvine Korean Cultural Festival
May	Jarana Carnavalera	Jarana Carnavalera en California
May	Mariachi Festival	Viva la Vida/Calacas
May	New Horizons Dinner-Cinco de Mayo	YMCA of OC
May	OC Greek Festival	St. John the Baptist Greek Orthodox Church
May	OC Human Relations Awards Dinner	OC Human Relations
May	Open Garden Day	City of Santa Ana
May	Orange County Asian Chamber Leadership Mixer	Asian Business Association of Orange County
May	Rancho Days Fiesta-Heritage Hill Historical Park	OC Parks
May	Saddleback College Tabling Event	Saddleback College
May	Santa Ana College Tabling Event	Santa Ana College
May	SOKA International Festival	SOKA University

Potential Community Events Calendar 2021 - 2022

Month	Event Name	Organizer
May	State of the Community	Fullerton Collaborative
May	Cinco de Mayo Fiesta	The Outlets at San Clemente
May	UCI Anti-Cancer Challenge Run	UC Irvine
May	Vesak Festival - Buddha's Birthday Celebration	Giac Ly Buddhist Monastery
May	Vesak Festival - Mile Square Park	Vietnamese American Buddhist Congregation
May	Veterans Luncheon	LULAC
May	Veterans Resource Center Santa Ana College	Santa Ana College
May	Voice of Change	OC Health Care Agency (OCHCA) and Orange County Asian and Pacific Islander Community Alliance (OCAPICA)
May	Willcock Community Meeting	Orange County Communities Organized for Responsible Development
June	Annual Filipino-American Lawyers of Orange County Membership Meeting and Mixer	Filipino-American Lawyers of Orange County
June	Annual Orange County Hiring Fair	Michelle Steel, Supervisor, 2nd District Orange County Board of Supervisors and KACC Foundation

Potential Community Events Calendar 2021 - 2022

Month	Event Name	Organizer
June	APIA Vote Leadership Institute	Orange County Asian Pacific Islander Community Alliance
June	Candidate Academy	Orange County Labor Federation
June	Celebracion y Mercadito	Radio Santa Ana/Centro Cultural Santa Ana
June	Citizenship Ceremonies	United States District Court, Central District of California
June	Citizenship Fair	Orange County Communities Organized for Responsible Development
June	Feria de Salud	Las Lomas Gardens Apartments
June	Fiesta Appreciation Day - Caregiving Day	Crooru Caregivers on-demand
June	OCCORD Leadership Academy	Orange County Communities Organized for Responsible Development
June	Open House	Rancho Santiago Community College District
June	San Juan Capistrano Summer Concert Series	City of San Juan Capistrano
June	Small Business Week Awards	Hispanic Chamber of Commerce of Orange County
June	Tabling Sunday Mass Christ Our Savior Parish	Christ Our Savior Parish Church

Potential Community Events Calendar 2021 - 2022

Month	Event Name	Organizer
July	American Indian Families	Walking Shield
July	Candidate Academy	Orange County Labor Federation
July	Summer Jazz Concert Series	Segerstrom Center for the Arts
July	Cypress Community Festival	Cypress Community Festival Association
August	American Mariachi	South Coast Repertory
August	Brea Fest	City of Brea
August	Canto de Anaheim	Pacific Symphony
August	Chicanxs Unidxs Annual Fundraiser	Chicanxs Unidxs
August	Annual Civic Expo & National Night Out	City of La Palma
August	Concerts in the Park	City of Orange
August	CSU Fullerton Move-In Day	CSU Fullerton
August	Downtown Fullerton Farmers Market	City of Fullerton
August	Fiesta Music Festival	San Clemente Chamber of Commerce
August	Movies in the Park Series	City of Fountain Valley
August	Sizzlin' Summer Concert Series	City of Irvine
August	National Night Out	Mission Viejo Police Department

Potential Community Events Calendar 2021 - 2022

Month	Event Name	Organizer
August	OC Night Market	Costa Mesa
August	Orange County Fair	Costa Mesa
August	Placentia Certified Farmers Market	City of Placentia
August	Sabor a Mar - Folcklorico/Mariachi	Relampago del Cielo
August	Evening in the Park Summer Concerts	City of San Juan Capistrano
August	Seal Beach Farmers Market	City of Seal Beach
August	Senior Fitness Expo	City of Irvine
August	The Vic	Victoria Skimboards
August	Musicals and Plays Series	Santa Ana College
September	9/11 Commemoration	The Richard Nixon Presidential Library & Museum
September	AASCSC Moon Festival	Asian American Senior Citizens Service Center
September	Anaheim Mariachi Festival	Rhythmo Inc. Mariachi Academy
September	Discoverfest	CSU Fullerton
September	City of Brea Wellness Festival	City of Brea
September	Fiestas Patrias	City of Santa Ana

Potential Community Events Calendar 2021 - 2022

Month	Event Name	Organizer
September	National Voter Registration Day Press Conference	City of Santa Ana
September	County of Orange Career Expo and Open House	County of Orange
September	Irvine Global Village Festival	City of Irvine
September	Irvine Moon Festival	Irvine Chinese School/South Coast Chinese Cultural Center
September	Lake Forest Heroes Day	City of Lake Forest
September	Mid-Autumn Children's Festival	The Coordinating Committee of Vietnamese American Youth Organizations
September	OCEA Health Fair	Orange County Employees Association
September	Orange International Street Fair	City of Orange
September	SAC Club Rush	Santa Ana College
September	Santa Ana Family Day	MAGIC Inc. Academy of the Arts
September	Westminster Dia de la Familia	City of Westminster
October	Anaheim Fall Festival & Halloween Parade	City of Anaheim
October	Citizenship Ceremonies	United States District Court, Central District of California
October	Halloween Family Fun	City of Stanton

Potential Community Events Calendar 2021 - 2022

Month	Event Name	Organizer
October	Senior Wellness Expo	City of Yorba Linda
October	Community Resource Fair	Huntington Beach Adult School
October	CSU Fullerton Faculty Voter Registration Drive	CSU Fullerton
October	Donate a Day of Service Event	Cypress College
October	Downtown Fullerton Art Walk	Magoski Arts Colony
October	Fullerton Museum Center Event	City of Fullerton
October	Huntington Beach Airshow	The Great Pacific Airshow
October	Hispanic Heritage Month Mixer	Hispanic Chamber of Commerce of Orange County
October	Irvine Evergreen Chinese Senior Association Monthly Meeting	Irvine Evergreen Chinese Senior Association Monthly Meeting
October	Irvine Valley College Pinoy Piyesta	Elevate AAPI @ Irvine Valley College
October	Employee Registration Event	Masimo
October	Nashtai & Ashnai: Persian Breakfast with the UC Irvine Iranian Student Union	Iranian Student Union at UC Irvine
October	OC Arirang Harvest Festival	Arirang OC Festival
October	OC Film Fiesta	Media Arts Santa Ana
October	OC International Auto Show	Motor Trend Group, LLC

Potential Community Events Calendar 2021 - 2022

Month	Event Name	Organizer
October	OC Roller Derby Competition	OC Roller Derby
October	Voter Education Presentation	Orange Coast College
October	Placentia Harvest Festival	Placentia Heritage Festival Committee
October	Relationship Building Network Business Expo	Relationship Building Network, Inc.
October	Arts Celebration: FALL FOR ALL	Seegerstrom Center for the Arts
October	Silverado Country Fair & Folk Festival	Silverado Country Fair & Folk Festival
October	Community Engagement Fair	UC Irvine
October	Viet Film Fest	Vietnamese American Arts and Letters Association
October	Western State College Law Voter Registration Drive	Western State College of Law Student Council
November	Delhi Center Anniversary Dinner	Delhi Center
November	Dia de los Muertos	Calacas Inc
November	Golden Future 50+ Expo	Golden Future Expos Inc.
December	Christmas Eve in Mexico-Nochebuena	Chapman University
December	Project Soapbox	Actions Civics CA
December	Winter Wonderland	City of Irvine

Mobile Fleet



Vote Center Newsletter



[Home](#) | [Voting](#) | [Results](#) | [About](#)

Ballot Drop Boxes in Fire Evacuation Zones

We are closely tracking the Santiago (Irvine) and Blue Ridge (Yorba Linda) fires for any issues with our ballot drop boxes or Vote Centers (which are scheduled to open on Friday, October 30). [Currently, four drop boxes and one Vote Center are in the evacuation zones \(view updated info on our mapping system\).](#)



Neal Kelley
Registrar of Voters

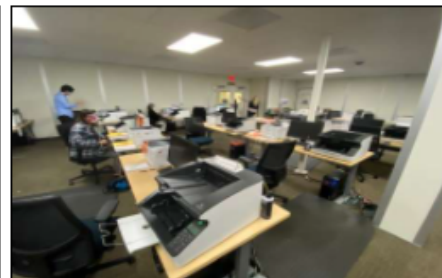
Current Tweet

"The convenience factor and hard work put into this was resulted in no less than a happy face. It made my day." - Rick, a voter who visited pop-up voting at the Laguna Niguel Regional Park on Saturday, 10/24 #ocvote2020 #ocvotecenters2020

[View Tweet](#)



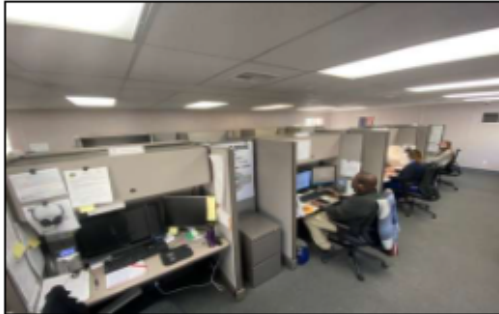
Pop-Up Voting Hits Record High Turnout



Ballot Scanning Keeping Up with Increased Returns

This past weekend we operated pop-up mobile voting at Laguna Niguel Regional Park and Main Place Mall in Santa Ana. Over 1,000 voters cast ballots at both events (with 600 in Laguna Niguel - a record for pre-election mobile voting). [Our next mobile opportunity is tomorrow at the Church of Jesus Christ of Latter-day Saints, 9801 Newport Ave., Santa Ana.](#)

Following the March Presidential Primary, we doubled our ballot-scanning capacity in anticipation of potential voter behavior changes under COVID-19. We have scanned 539,003 ballots to date - we will have all ballots received through Election Morning ready to post results that evening.



Voter Call Volume Remains Heavy

In the past month, we have handled 42,188 calls (to date) versus 16,577 during the same time period leading up to the Presidential Primary. Call volume is always higher for general elections, but the volume of calls is up substantially when compared to previous presidential generals.



Look for Us on Honda Center Signage

This week the Honda Center will be promoting our "super" Vote Center site on all of their outdoor big screens. Voters will also receive a special "Ducks I Voted" sticker - our Honda Center location opens on October 30th at 8:00 a.m.



FOLLOW US



SHARE NEWSLETTER

Current Voter Registration
1,771,377

[Registration](#) | [Data](#) | [Results](#) | [Contact Us](#) | [Update email preferences](#)

#voteoc2020 #protect2020
#ocvotecenters2020

Neal Kelley
Registrar of Voters

Publications

Public Notice for Consultation Meetings

PUBLIC NOTICE

Notice is hereby given that Consultation Meetings for the development of the draft Election Administration Plan Pursuant to the Voter's Choice Act will be held on July 21, 2021 for the language community and August 5, 2021 for the disability community. These hearings are for interested residents, representatives from the disability community and community organizations and individuals that advocate on behalf of, or provide services to, individuals with disabilities and for representatives, advocates, and other stakeholders of the County's language communities.

Notice is further given that the Orange County Registrar of Voters Neal Kelley invites interested representatives of the County's disability communities and language communities to provide consultation and input on the development of the County's draft Election Administration Plan (EAP). All interested parties are encouraged to attend the virtual meeting on July 21, 2021 from 1:30 p.m. to 3:00 p.m. for the language community and August 5, 2021 from 10:00 a.m. to 11:30 a.m. for the disability community.

Requests for documents in accessible formats, interpreting services, assistive listening devices, or other accommodations should be made by calling (714) 567-5039, no later than four working days prior to the meeting.

Visit ocvote.com/eap for zoom links and more information.

Dated this 30th day of June, 2021

Neal Kelley
Registrar of Voters

Public Notice for August 25, 2021 Public Hearing

PUBLIC NOTICE

Notice is hereby given that a Public Hearing for the Updated Election Administration Plan (EAP) pursuant to the Voter's Choice Act will be held on Wednesday, August 25, 2021.

Notice is further given that the Updated Election Administration Plan is posted on the Registrar of Voters' website at ocvote.com/eap. The Plan is available in English and translated versions in Spanish, Vietnamese, Chinese, Korean, Tagalog, Gujarati, Hindi, Japanese, and Farsi (Persian) will be subsequently posted in accordance with federal and state law.

Comments on the Plan may be submitted using the online comment form on the Registrar of Voters' website (ocvote.com/eap), by email to ocvoter@rov.ocgov.com, in writing, or in person at the Public Hearing. Written comments should be addressed to the Orange County Registrar of Voters, 1300 S. Grand Avenue, Building C, Santa Ana, CA 92705.

Meeting Date: Wednesday, August 25, 2021
Meeting Time: 6 p.m. to 8 p.m.
Meeting Location: Orange County Department of Education – Boardroom
200 Kalmus Drive
Costa Mesa, CA 92626

The Public Hearing will also be livestreamed online at ocvote.com/eap.

For more information regarding the Public Hearing, please call 714-567-7600 or visit ocvote.com/eap.

Notice is further given that the location is an accessible facility. Requests for documents in accessible formats, interpreting services, assistive listening devices, or other accommodations should be made by calling (714) 567-5039, no later than four working days prior to the meeting.

Dated this 9th day of August, 2021.

Neal Kelley
Registrar of Voters

Public Comments & Feedback

2021 Amended Election Administration Plan

Public Comment	OCROV Comment
<p>Pg. 1: The Executive Summary helps frame the VCA for the public. But it would be helpful to include information that empowers the public to participate in the VCA planning process. For example, it would be helpful to describe how the EAP is created and updated using feedback from the public. Additionally, adding facts and context can be useful for helping the public understand the EAP such as how many voters OCROV serves and the size and scope of its staff.</p>	<p>OCROV updated the Executive Summary (pg.1) to highlight importance of public feedback when creating and updating the Election Administration Plan. OCROV also included details on size of staff and number of voters that are served.</p>
<p>Pg. 2,16,17 – The EAP should provide more information on Vote-by-Mail (VBM) envelopes. In our experience the OCROV's VBM envelopes generally incorporate best practices for usability and accessibility into the design. However, VBM envelopes should have punched holes bookending the signature line which allow voters with disabilities a tactile way to find the signature line. Importantly, VBM envelopes for Remote Accessible Vote-by-Mail must have signature holes in the correct location on the envelope for voter to sign in the proper place. The EAP should discuss this topic.</p>	<p>Currently, OCROV's ability to redesign the VBM envelope remains limited due to operational features tied to the VBM processing equipment itself. Nevertheless, OCROV will continue to look for opportunities to improve the VBM experience for voters with disabilities.</p>
<p>Pg. 17,18, and 52 – The OCROV's commitment to make American Sign Language (ASL) services available via video conferencing software at voting centers is commendable. However, there needs to be better information for the public that this service is available. There should be signage at vote centers in ASL indicating the service is available. Similarly, the language assistance card should include ASL. We would also recommend including outreach events for the deaf community in Orange County on accessible voting options.</p>	<p>OCROV expanded the Video Conferencing section of the report (pg. 17-18) to include additional details on ways that OCROV can better inform voters of the availability of ASL services that are offered at each Vote Center. OCROV will continue to outreach to the deaf and hard of hearing community in Orange County.</p>
<p>Pg. 28 and 42 – The EAP could use more information and analysis on the costs of the VCA. First, there is a lack of detail on the "hard costs" of the VCA on pg. 28. Although, the VEOP cost information on pg.42 is more detailed, it would be better if this information was presented alongside the costs described earlier.</p>	<p>OCROV incorporated an updated cost analysis table (pg.29) that outlines some of the VCA costs projections and savings through the year 2025.</p>
<p>Pg. 40 – Specify that mobile voting options will be accessible to voters with disabilities.</p>	<p>OCROV revised the mobile voting section (pg. 40) of the EAP to clarify that mobile voting options will continue to be accessible to all voters, including voters with language and accessibility needs.</p>
<p>However, there's one request: for Koreans, vote drop box location to be near at Korean Supermarket would be greatly appreciated because all most all Koreans go to a Korean grocery market every week, and so it is not only convenient to bring the ballot over, but also it reminds them to vote. I was informed that Buena Park & Fullerton area is well covered for high Korean traffic destinations, whereas Garden Grove is not. There's only one Korean Supermarket, A.R. Market, in Garden Grove right on Garden Grove Blvd. between Gilbert & Galway that has high traffic (several thousand a week) with Koreans and Vietnamese all together almost half and half. If a ballot drop box is placed near at A.R. Market that would be great.</p>	<p>OCROV has partnered with the A.R. Market owner to permanently install a ballot drop box at the A.R. Market Fullerton location. OCROV will continue to explore ballot drop box placement options throughout the Garden Grove region.</p>